



Designer maker

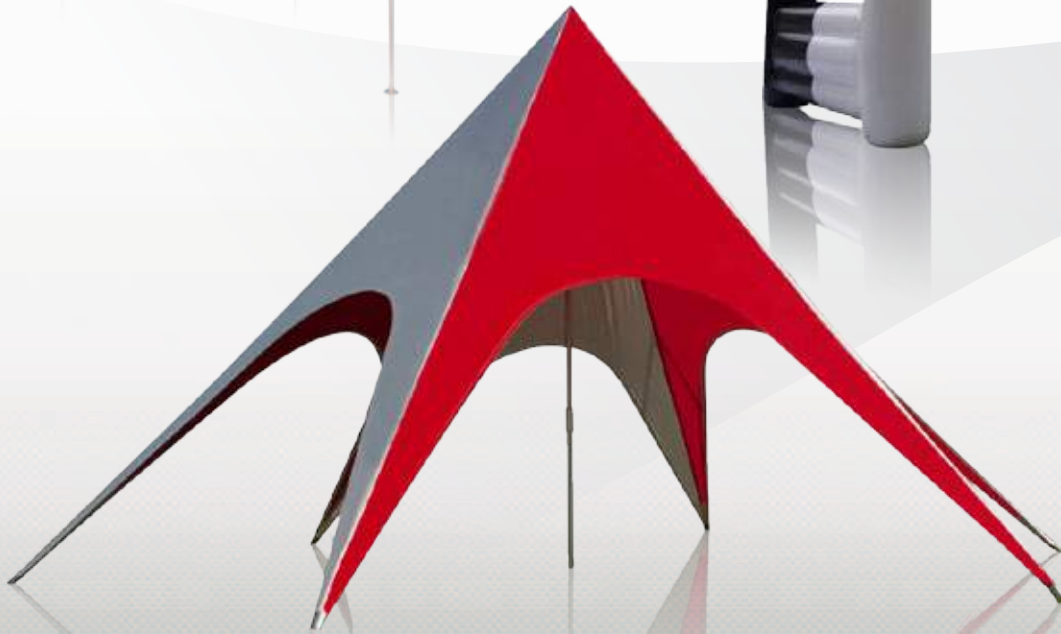


# Enhance your events !

FOLDING TENTS



STARFULL SHELTER  
/ CANOPY



INFLATABLE GCOM



INFLATABLE AIRTENT



CUSTOM FURNITURE



## ACCESSORIES



## FURNITURE EVENT



## CUSTOM INFLATABLE FURNITURE BUBBLEBUT



## COMMUNICATION SUPPORTS



# SUMMARY

4	<b>LP Tent Vision</b>
6	Fabrics and customization
8	Renting
10	LP Tent Customer service
11	Sustainable development
12	<b>Folding Tent Series</b>
14	ECO series
16	Slight series
18	Colecti'V series
20	XP series
22	ZP series
24	Pagoda design
26	<b>Custom tent</b>
28	<b>Tent options</b>
30	<b>3D inspiration</b>
32	<b>Starfull and inflatable shelters</b>
34	STARFULL series
36	AIR-MONSTER series
38	AIR-DESIGN series
40	Inflatable GCOM
42	Custom Tents
44	<b>Tent accessories</b>
50	<b>Communication supports</b>
56	<b>Custom inflatable furniture Bubblebut</b>
58	<b>Furniture</b>
64	<b>Events and stage accessories</b>
70	<b>Gallery</b>
74	<b>They trust LP Tent</b>
75	<b>An international network</b>

## > *A story*

30 years of experience and expertise in the field of manufacturing and rental of mobile public and industrial shelters has enabled us to put together the technical elements required to develop various product ranges which we are happy to present to you today.

## > *Quality as a reference*

Our central priority : a recognized and standardized quality to guaranty excellent products.



Approved CTS : security standard applicable to shelters and tents for facilities hosting public.



European standard applicable to temporary shelters.



M2 fire-retardant standard. French norm of flammability of products intended to public.

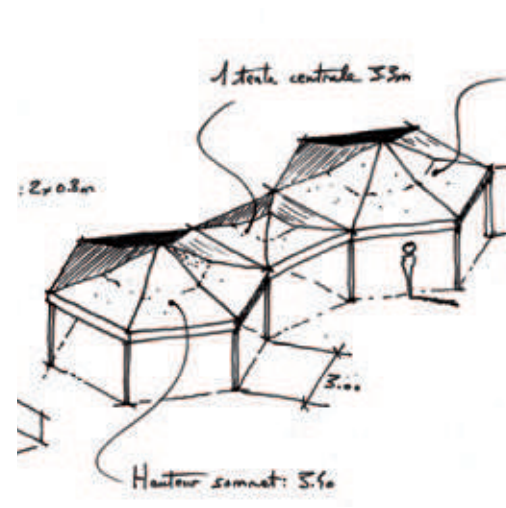
## > *Service first*

Our daily priority is to provide excellent service to our customers. Everything is implemented to follow any request from first contact to the finalization of the order. After sales and post purchase tracking services take the lead to always meet your expectations.

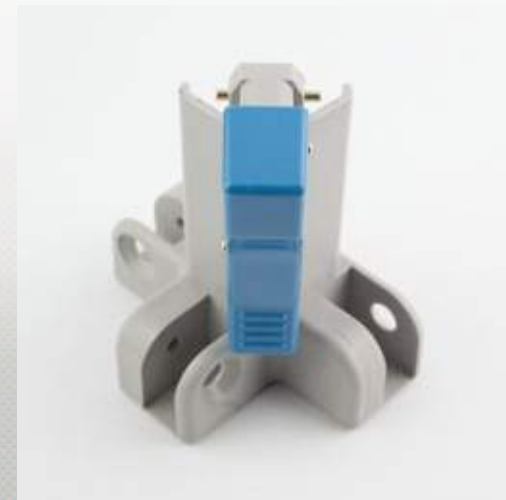
## > *Partnerships*

We offer a variety of partnerships to acquire the best products. Contact us to request your partnership.





ASSEMBLY  
-60s



# Fabrics and customization

## › Printing

Improve your communications by personalizing your company pop-up tents and your communication with your colors.

We advise you with your printing projects, from the idea to the achievement and offer a complete service.

Depending on your project, we offer various methods for your personalization, suitable to your budget. Provide us with your layouts in high definition (text and logos vectorized images in 1 / 10th 600 dpi), and we will manufacture your personalized tent.

Here are various types of printing we offer :

### › Marking on any base support

Your logo or text is printed with a digital label on a surface and then transferred on a selected area by hot pressing.

### › Silkscreen printing on any base support

We create one or several layers depending of the number of colors. The layers are kept and reusable. The ink is injected through this stencil. We recommend this way for important series to save printing cost.

### › Digital printing on PVC fabric

This is an ink jet printing. This method allows to work on photos or logo with multiple colors. We recommend it to avoid flatted color area.

### › Dye sublimation on polyester fabric

The ink is deposited in a specific way on the fabric via a polyester digital printer. The ink is absorbed by the support to be exposed to 200 ° C in a short time. Following this exposure, the ink penetrates into canvas. High quality printing, the colors are very bright and it offers maximum hold time and resistance to folding and unfolding of your fabric.

## › Tent fabrics

To meet the needs of everybody, LPTENT has developed 4 finishes fabrics :

### › Tarpaulin Technitex 300gr/sqm ★★☆☆

Flexible and resistant tarpaulin Technitex ® 300g / sqm is composed of nylon polyester with a PVC coating on one side. This cover is flame resistant, UV and 100% waterproof.

#### AVAILABLE COLORS

			RAL 9016
PANTONE 7455C	PANTONE Black C	PANTONE 200C	PANTONE 561C

### › Tarpaulin PVC ® 520gr/sqm ★★☆☆

PVC tarpaulin 520gr/sqm is fire retardant M2 according to NF P 92503. It has an ultra violet treatment and has the following properties: anti mold, fungal and saline.

#### AVAILABLE COLOR

RAL 9016
----------

### › Tarpaulin PVC ® 380gr/sqm ★★☆☆

This flexible and resistant PVC canvas 380gr/sqm according to M2 fire NF P 92503, is of unique design. It has a ultra violet treatment and a topcoat which ensures durability and gives the following properties: anti-mold, mushroom and saline.

The thickness of this sheet has been studied to resist the folding and unfolding of folding tents.

#### AVAILABLE COLORS

			RAL 9016
RAL 6005	RAL 1023	RAL Coca Cola	RAL 7042
RAL 2007	RAL 9011	RAL 5005	RAL 1015

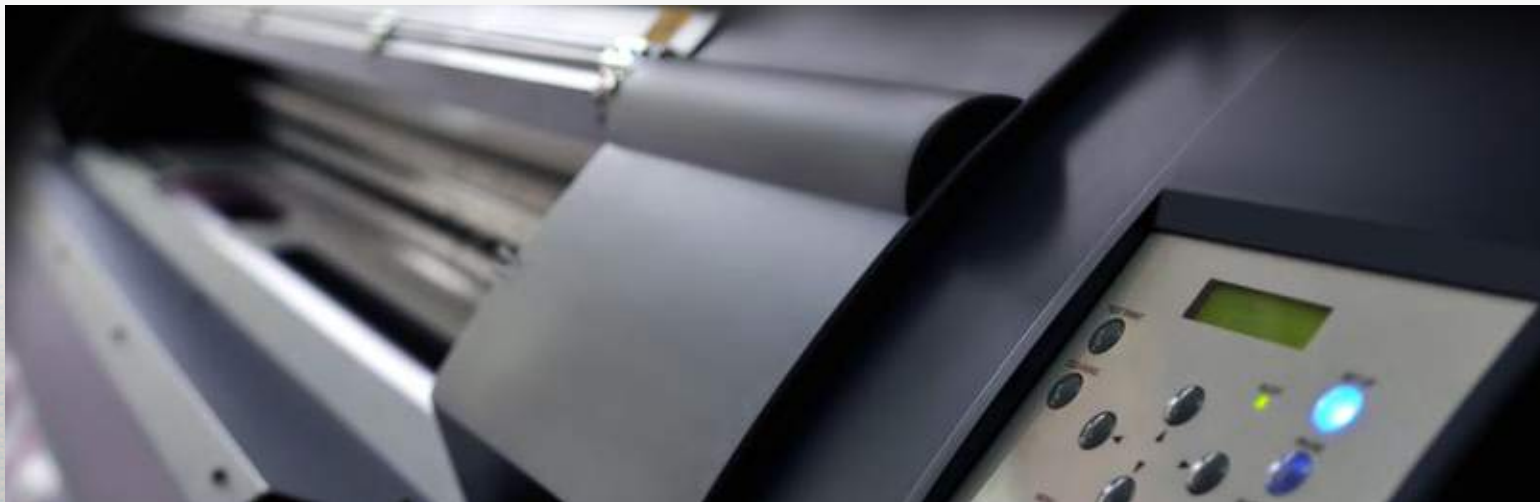
### › Tarpaulin Ristop ® 124gr/sqm ★★☆☆

Derived from the parachute fabric, tarpaulin Ristop is fireproof M1. Ligth and resistant, it is intended for our range of inflatable products.

#### AVAILABLE COLOR

RAL 9016
----------





# Renting

## › Renting for professionals, *made by professionals*

- › We examine the service which suits your need.
  - › We deliver and install all over Europe.
  - › Trust in our 30 years of experience.
- All our services are made with our materials in conformity with BVCTS regulation and fire retardant M2 standard.

### THE OPTIONS

#### › All inclusive service

We take responsibility for delivery and setting up of the tents.  
Our team ensures the dismantling of material.

#### › Self service

You pick up the material in our warehouse and bring it back at the end of your event.

#### › Round trip service

Delivery to the event by our carrier. Installation at your premises.

**PARK OF 500  
FOLDING STANDS  
AT YOUR SERVICE**

### OUR PRODUCTS AVAILABLE FOR RENTING



1



2



3



4



5



6



7



8

- 1 Folding tent XP 3mx3m (frame, roof, carrying bag)
- 2 Folding tent ZP 5mx5m (frame, roof, carrying bag)
- 3 Customizable and inflatable arch
- 4 Rack for carriage (for folding tents)
- 5 Customizable Totem
- 6 Polypropylene table
- 7 Polypropylene bench
- 8 Concrete block and ballasting





SIMPLY  
RENTING



# The after sales service

Our After sales service ensures, if needed, the restoration of your goods.  
We make the repairs or you realize them yourself, according to the two following processes :

## REPAIRS ON SITE



## REPAIRS BY YOURSELF



You can send us your material or drop it off directly in our warehouse.



# Sustainable development

---

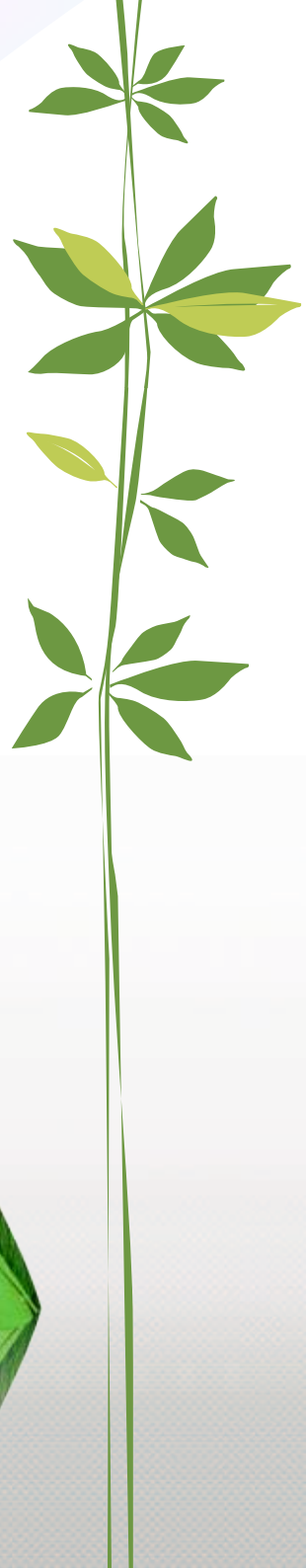
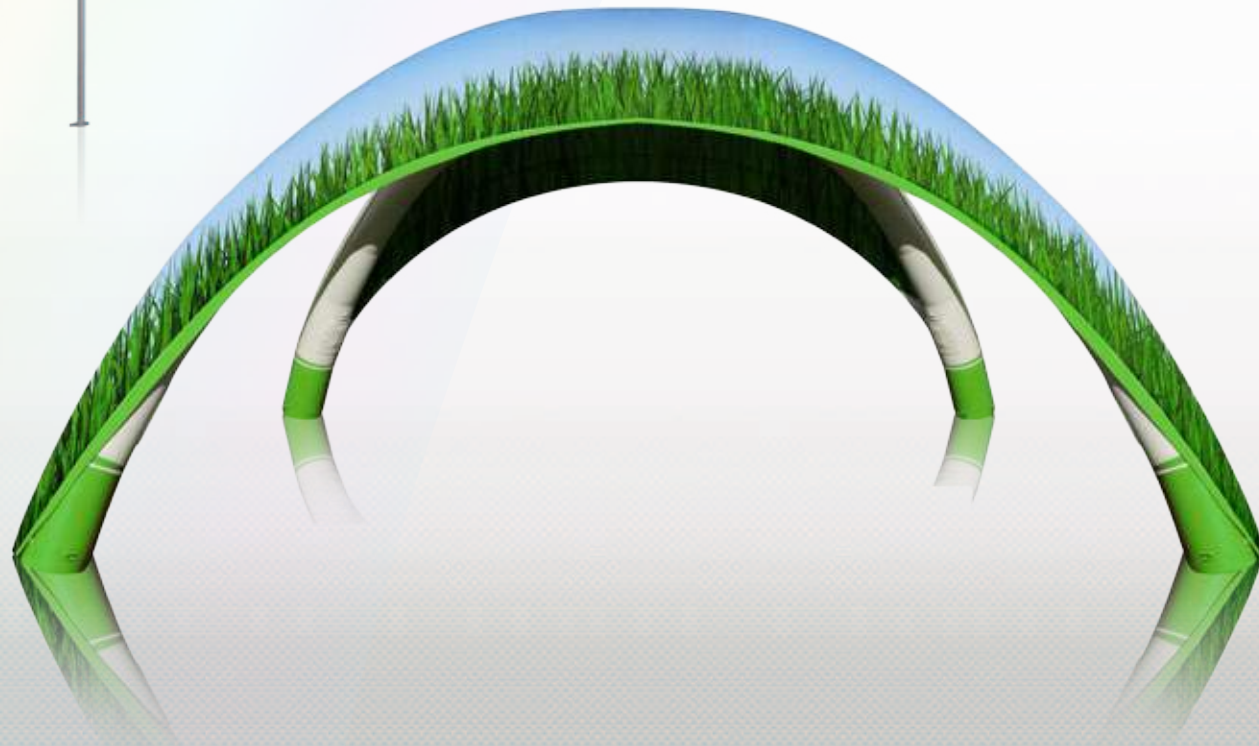


Sensitive ECO-responsibility, our company is environmentally conscious.

This is why we are committed to provide you with a fabric which contains no heavy metals nor contaminants, and therefore meets the "Recyclable" conditions.

Almost all import fabrics have heavy metals such as lead and pollutants that destroy the environment and are not recyclable, unlike the products we use which are conform with REACH (Registry consistent valuation at Restrictions of Chemicals **REACH 1907/2006**).

Environmentally conscious, our PVC tarpaulin is recyclable and contains no heavy or pollutants. This cover is 100% made in France or EC.





# Our folding tents range



## ECO series

› Familial use

- › Fabric Technitex ® 300gr/sqm ★★★★★
- › Frame in metal alloy anti-rust epoxy painting
- › Injected nylon connector piece
- › Steel bolts



## Slight series

› Regular use

- › Fabric Technitex ® 300gr/sqm ★★★★★
- › Frame in anodized aluminium
- › Injected Fiberglass
- › Stainless steel bolts



## Colecti'V series

› Daily use

- › Fabric Technitex ® 300gr/sqm ★★★★★
- › PVC fabric 520gr/sqm ★★★★★
- › PVC fabric 380gr/sqm ★★★★★
- › Frame in anodized aluminium
- › Connectors in aluminium
- › Stainless steel bolts



# A folding tent every need !



## XP series

› Semi-intensive use

- › PVC ® 380gr/sqm fabric ★★★★★
- › Frame in anodized aluminium
- › Connectors made of Injected Fiberglass
- › Stainless steel bolts
- › Pagoda style available



## ZP series

› Intensive use

- › PVC ® 380gr/sqm fabric ★★★★★
- › Frame in anodized aluminium
- › Connectors in injected fiber glass
- › Stainless steel bolts
- › Pagoda style available



## Custom folding tents and options

LPTENT manufactures on demand all shapes and sizes for folding tents. Contact us for more details.

[All the folding tents are printable.](#)

# Folding tents **ECO** series

These tents are recommended for occasional and average intensity use. Easy corner locking system pull pin joints. Frame in metal alloy anti-rust epoxy painting. Injected nylon connector piece. Steel bolts.

## LEGEND

- 1 Injected nylon connector
- 2 Metal bolts
- 3 Superior part of foot
- 4 Scissors in metal alloy anti-rust epoxy painting
- 5 Profile in metal alloy anti-rust epoxy painting
- 6 Height adjustment
- 7 Walls set up with Velcro 50mm and connectors between them

## AVAILABLE SIZES

- ECO330** 3mx3m 9 sqm  
**ECO345** 3mx4,5m 13,5 sqm  
**ECO360** 3mx6m 18 sqm

### Blank wall



Completely opaque

### Door wall



Central Door double ZIP fastener

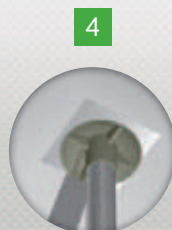
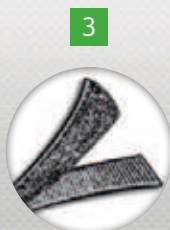
### The ECO walls are supplied as a complete set



- > **ECO330 Walls pack :**  
Three 3m blank walls and one 3m door wall.
- > **ECO345 Walls pack :**  
Two 4,5m blank walls, One 3m blank wall and one 3m door wall.
- > **ECO360 Walls pack :**  
Five 3m blank walls and one 3m door wall.

	Weight	Measurements when folded	Height of peak	Number of legs	Number of peaks	Surface	Height under flap
<b>ECO330</b>	25kg	1,58x0,24x0,24	3,15m	4	1	9 sqm	2,00 à 2,30m
<b>ECO345</b>	32kg	1,58x0,24x0,32	3,15m	4	2	13,5 sqm	2,00 à 2,30m
<b>ECO360</b>	43kg	1,58x0,26x0,42	3,15m	6	3	18 sqm	2,00 à 2,30m





## PACK CONTENTS

Frame + top / Carrying bag / Wall bag (optional walls) / Rope kit.



## FINISH

Perfect aesthetic finish with the wall ties in velcros 50mm.



## ADVANTAGES ECO

Value for money

**In conformance with directive 98/6/CE**

Low flammability fabric

Wind resistance: + 50km/h (with proper tethering)

Soft and resistant fabric **Technitex® 300gr/sqm**, polyester nylon with PVC one side. Hardly flammable, anti UV and 100% waterproof.

## AVAILABLE COLORS

RAL 9016

PANTONE Black C

PANTONE 200C

PANTONE 7455C

PANTONE 561C

- 1 Tarpaulin reinforced on each corner.
- 2 Backing and strap on the cross brace.
- 3 Velcro 50mm.
- 4 Reinforcement on the upper section.

# Folding tents **S**light series

Daily, private or professional use, the quality for best price. 100% anodized aluminum Slight frame, quality EN 573 6060, injected fiber glass connector piece, stainless steel bolts. 40mm octagonal profile Slight PVC fabric available. Contact us for rates and availability.

## LEGEND

- 1 Corner trigger
- 2 Stainless steel bolts by covering
- 3 Injected fiber glass connector piece
- 4 Anodized aluminum scissors
- 5 Anodized aluminum profile
- 6 Pin for height setting
- 7 Foot plate
- 8 Walls set up with Velcro 50mm and connection between them

## AVAILABLE SIZES

- SL330** 3mx3m 9 sqm  
**SL345** 3mx4,5m 13,5 sqm  
**SL360** 3mx6m 18 sqm

### Blank wall



Completely opaque

### Door wall



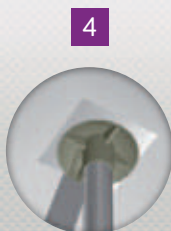
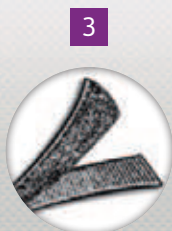
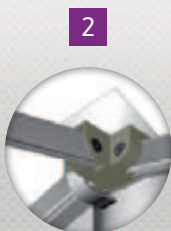
Central Door double ZIP fastener

### The Slight walls are supplied in complete set:



- > **SL330** Walls pack :  
Three 3m blank walls and one 3m door wall.
- > **SL345** Walls pack :  
Two 4,5m blank walls, One 3m blank wall and one 3m door wall.
- > **SL360** Walls pack :  
Five 3m blank walls and one 3m door wall.

	Weight	Measurements when folded	Height of peak	Number of legs	Number of peaks	Surface	Height under flap
<b>SL330</b>	24kg	1,52x0,29x0,29	3,15m	4	1	9 sqm	1,80 à 2,00m
<b>SL345</b>	32kg	1,52x0,29x0,37	3,15m	4	2	13,5 sqm	1,80 à 2,00m
<b>SL360</b>	43kg	1,52x0,31x0,47	3,15m	6	3	18 sqm	1,80 à 2,00m



## PACK CONTENTS

Frame, top and technical protective cover.



## FINISH

Perfect aesthetic finish with the wall ties in velcro 50mm.



## ADVANTAGES Slight

### Regular use

2 years warranty

European Safety Standards

### Low flammability fabric

Full anodized aluminum structure.

Injected fiberglass connector piece

**Wind resistance +60km/h with proper tethering.**

Soft and resistant fabric **Technitex® 300gr / sqm, polyester nylon** with PVC one side. Hardly flammable, anti UV and 100% waterproof.

## AVAILABLE COLORS

RAL 9016

PANTONE Black C

PANTONE 200C

PANTONE 7455C

PANTONE 561C

- 1 Tarpaulin reinforced on each corner.
- 2 Backing and strap on the cross brace.
- 3 Velcro 50mm.
- 4 Reinforcement on the upper section.



# Folding tents **Colecti'v** series

Easy and fast setting-up. Colecti'v range is designed for intensive use. Eight sides aluminium profile 50mm. Aluminium connecting parts. Stainless steel bolts. 3 qualities of fabric available : PVC 380gr/sqm, PVC 520gr/sqm or nylon polyester Technitex 300gr/sqm.

## LEGEND

- 1 Self-locking corner trigger
- 2 Stainless steel bolts
- 3 Injected fiberglass
- 4 Anodized aluminum scissors
- 5 Anodized aluminum profile
- 6 Anodized aluminum middle connector
- 7 Foot plate
- 8 Walls set up with Velcro 50mm and connection between them

## AVAILABLE SIZES

- COL330** 3mx3m 9 sqm  
**COL345** 3mx4,5m 13,5 sqm  
**COL360** 3mx6m 18 sqm  
**COL440** 4mx4m 16 sqm

## SECURITY REGISTER



Deliver by the prefecture

Applicable regulations  
 art R 123-5 C.C.H.  
 art 175-30  
 step of 23.01.89

### Blank wall



Completely opaque

### Door wall



Central door double ZIP  
 fastener passage of 90cm

### Semi-panoramic wall\*



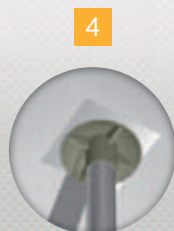
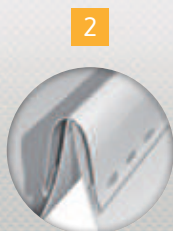
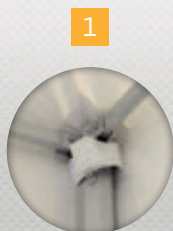
and encased curtain

\* Only available in PVC 380/sqm  
 and 520/sqm quality.

### The Colecti'v walls

The Colecti'v walls are supplied as a full set for quality Technitex, and by numeral count for quality PVC 380 and 520gr/sqm.

	Weight	Measurements when folded	Height of peak	Number of legs	Number of peaks	Surface	Height under flap
<b>COL330</b>	30kg	1,52x0,25x0,25	3,15m	4	1	9s qm	1,90 à 2,05m
<b>COL345</b>	36kg	1,52x0,31x0,31	3,15m	4	2	13,5 sqm	1,90 à 2,05m
<b>COL360</b>	49kg	1,52x0,31x0,47	3,15m	6	3	18 sqm	1,90 à 2,05m
<b>COL440</b>	42kg	1,52x0,40x0,40	3,15m	4	1	16 sqm	1,90 à 2,05m



## PACK CONTENTS

Frame, top and technical protective cover.



## ADVANTAGES Colecti'V

### Regular use

2 years warranty  
European safety standard  
Aluminum frame

### Approvable CTS

according to the NV 1965 standard

**Wind resistance : +70km/h**  
(with proper tethering).

### Available in 3 fabric qualities :

- > **Technitex® 300gr/sqm**, polyester nylon with PVC one side.
- > **520gr/sqm PVC** fabric M2 fire-resistant.
- > **380gr/sqm PVC** fabric M2 fire-resistant.

## AVAILABLE COLORS

> Tarpaulin **Technitex® 300gr/sqm** ★★ ★★

PANTONE 7455C

RAL 9016

PANTONE Black C

PANTONE 200C

PANTONE 561C

> Tarpaulin **PVC 520gr/sqm** ★★ ★★ ★★

RAL 9016



> Tarpaulin **PVC 380gr/sqm** ★★ ★★ ★★ ★★



RAL 2007

RAL 9016

RAL 1023

RAL Coca Cola

RAL 7042

RAL 6005

RAL 9011

RAL 5005

RAL 1015

- 1 Tarpaulin reinforced on each corner.
- 2 Backing and strap on the cross brace.
- 3 Velcro 50mm.
- 4 Reinforcement on the upper section.

# Folding tent **XP** range

The XP series is for professionals who have a daily requirement to shelter areas very quickly. The tents are recommended for intensive use and comply with all the relevant safety standards. Injected corner levers facilitate the setting-up and ensure an optimum roof tension. The XP aluminum grooved profiles provide extreme resistance to twisting resulting from assembly (bad weather, wind...).

## LEGEND

- 1 Self-locking injected fiber glass corner lever
- 2 Stainless steel bolts
- 3 Injected fiber glass connector
- 4 Foot plate
- 5 Aluminum bracket to protect the fabric
- 6 Aluminum profile diam. 40mm reinforced by grooves
- 7 Aluminum scissors
- 8 Walls setting-up by sliding keder.

## AVAILABLE SIZES

- XP220** 2mx2m 4 sqm  
**XP330** 3mx3m 9 sqm  
**XP345** 3mx4,5m 13,5 sqm  
**XP360** 3mx6m 18 sqm

## SECURITY REGISTER



Delivered by the prefecture

Applicable regulations  
 art R 12335 C.C.H.  
 art C75-30  
 step of 23.01.89

### Blank wall



Completely opaque

### Door wall



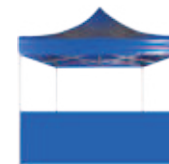
Central door double ZIP  
 fastener passage of 90cm

### Semi-panoramic wall



With interior encased curtain

### Half wall



Possibility to encase the upper  
 side as an option.\*

\* Supplied with its own tension bar

	Weight	Measurements when folded	Height of peak	Number of legs	Number of peaks	Surface	Height under flap
<b>XP220</b>	27kg	1,52x0,25x0,25	3,15m	4	1	4 sqm	1,90 à 2,05m
<b>XP330</b>	35kg	1,52x0,31x0,31	3,15m	4	1	9 sqm	1,90 à 2,05m
<b>XP345</b>	42kg	1,52x0,31x0,41	3,15m	4	2	13,5 sqm	1,90 à 2,05m
<b>XP360</b>	56kg	1,52x0,31x0,50	3,15m	6	3	18 sqm	1,90 à 2,05m



AVAILABLE IN PAGODA SHAPE (cf page 24)

ALL SIZE  
AVAILABLE ON  
DEMAND



## PACK CONTENTS

Frame, top and technical protective cover.



## ADVANTAGES XP

### Intensive use

5 year warranty

European safety standard **EN13782**

Approvable **CTS according NV 1965**

(snow and wind)

M2 fire-resistant fabric **PVC 380gr/sqm**

### Sliding walls with ties

Structure 100% anodized aluminum

**Wind resistance: +95km/h**

(with proper tethering)

Flexible and resistant PVC fabric with a unique design, treated for ultra violet protection and a lacquered finish which ensures its longevity.

Resistance -30° + 70°C.

## AVAILABLE COLORS

			RAL 2007
RAL 9016	RAL 1023	RAL Coca Cola	RAL 7042
RAL 6005	RAL 9011	RAL 5005	RAL 1015

- 1 All XP walls may have an additional tension in bottom part with a ground bar.  
For a perfectly tension fabric.
- 2 Backing and strap on the cross brace.
- 3 50mm Velcro.
- 4 Reinforcement and attachment with scissors.
- 5 Finish at the lowest point by Velcro. Fully hermetic tent.
- 6 Steel reinforcement in extremity of keder avoids tearing of fabric when intensive uses.
- 7 Reinforced fabric on each corner.
- 8 Reinforcement on the upper section.

1



2



3



4



5



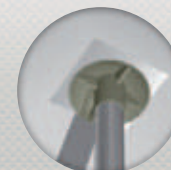
6



7



8



# Folding tent **ZP** range

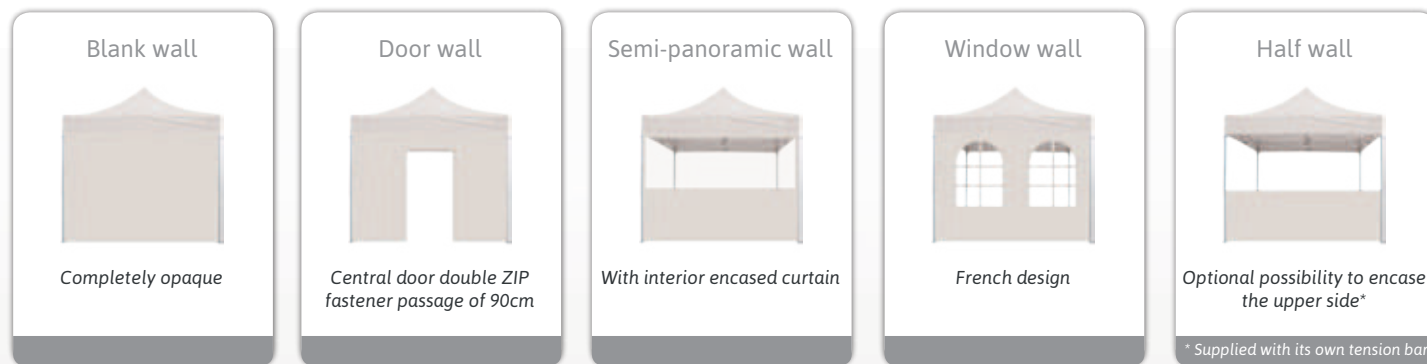
Tents specially designed for receptions, cultural and sporting events. They feature all the characteristics of a structure designed for instant deployment but now adapted for use in near permanent settings. Self-blocking corner system and easy automatic locking. 100% anodized aluminum ZP frame premium quality EN 573 6060, injected fiber glass connector pieces, stainless steel bolts, integrated tension cables.

## LEGEND

- 1 Aluminum bracket + ZP system
- 2 Injected fiber glass connector
- 3 Anodized aluminum profile
- 4 Stainless steel bolts
- 5 Aluminum scissors
- 6 Foot plate
- 7 Fully hermetic finish on bottom by Velcro
- 8 Sliding wall in upper part with Kim sliding part

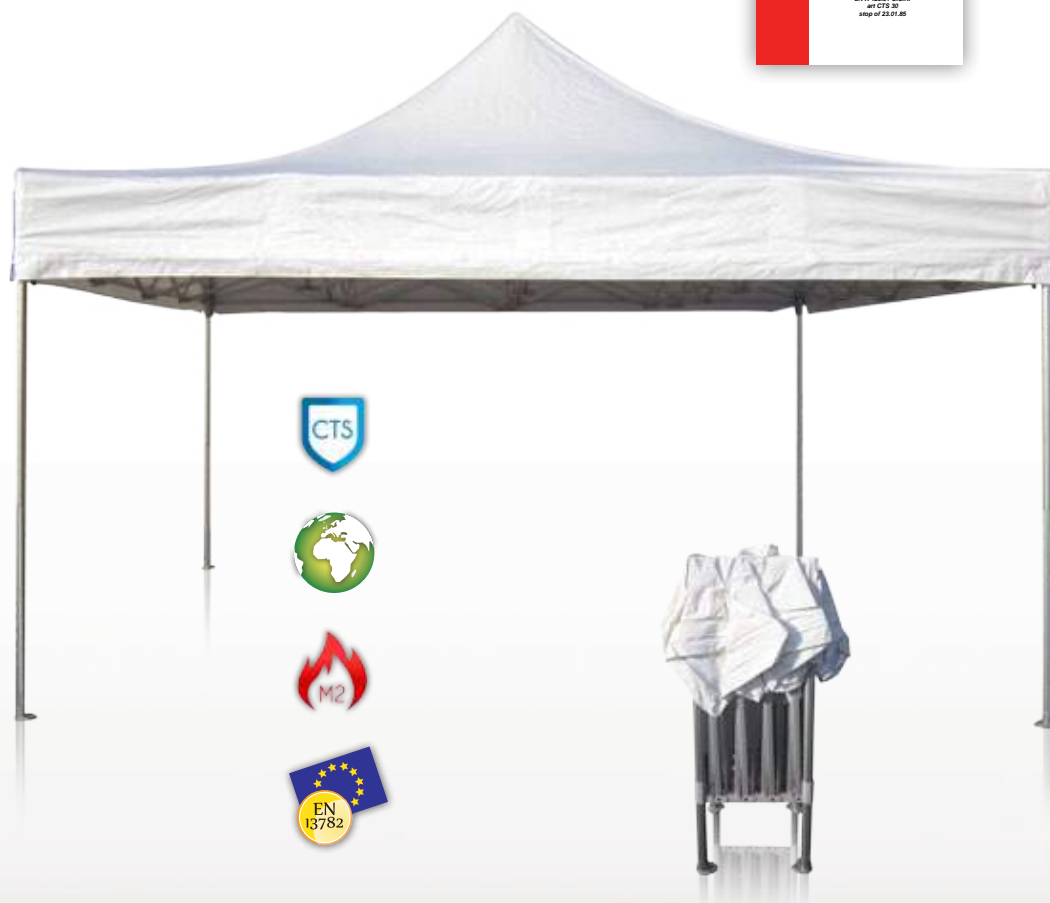
## AVAILABLE SIZES

<b>ZP330</b>	3mx3m 9 sqm	<b>ZP460</b>	4mx6m 24 sqm
<b>ZP360</b>	3mx6m 18 sqm	<b>ZP480</b>	4mx8m 32 sqm
<b>ZP440</b>	4mx4m 16 sqm	<b>ZP480R</b>	4mx8m 32 sqm
<b>ZP550</b>	5mx5m 25 sqm	<b>ZP5HEXA</b>	Ø5m 16,2 sqm
<b>ZP660</b>	6x6m 36 sqm	<b>ZP6HEXA</b>	Ø6m 23,4 sqm



	Weight	Measurements when folded	Height of peak	Number of legs	Number of peaks	Surface	Height under flap
<b>ZP330</b>	50kg	1,60x0,36x0,40	3,60m	4	1	9 sqm	1,97 à 2,20m
<b>ZP360</b>	80kg	1,60x0,36x0,65	3,60m	6	2	18 sqm	1,97 à 2,20m
<b>ZP440</b>	59kg	2,01x0,36x0,40	3,60m	4	1	16 sqm	1,97 à 2,20m
<b>ZP550</b>	114kg	1,60x0,60x0,60	3,60m	4	1	25 sqm	1,97 à 2,20m
<b>ZP5HEXA</b>	95kg	1,60x0,73x0,80	3,60m	6	1	16,2 sqm	1,97 à 2,20m
<b>ZP6HEXA</b>	102kg	1,60x0,73x0,80	3,60m	6	1	23,4 sqm	1,97 à 2,20m
<b>ZP660</b>	132kg	1,60x0,60x0,60	3,60m	4	1	36 sqm	1,97 à 2,20m
<b>ZP460</b>	82kg	2,01x0,36x0,54	3,60m	4	2	24 sqm	1,97 à 2,20m
<b>ZP480</b>	110kg	2,01x0,36x0,68	3,60m	6	3	32 sqm	1,97 à 2,20m
<b>ZP480R</b>	111kg	2,01x0,36x0,68	3,60m	8	3	32 sqm	1,97 à 2,20m

AVAILABLE IN PAGODA SHAPE (cf page 24)



## PACK CONTENTS

Frame, top and technical protective cover.



## ADVANTAGES ZP

### Extreme use

5 year warranty

European safety standard **EN13782**

Approvable CTS according NV 1965 (snow and wind)

**M2 fire-resistant fabric PVC 380gr/sqm**

Locking of corner without effort

Maximum mechanical stability

**Sliding walls with ties**

Structure 100% anodized aluminum

**Wind resistance: 100km/h**

(with proper tethering)

Flexible and resistant PVC fabric with a unique design, treated for ultra violet protection and a lacquered finish which ensures maximum longevity. Resistance -30° + 70°C. Sliding walls on keder + sliding and injected KIM® part.

## AVAILABLE COLORS

			RAL 2007
RAL 9016	RAL 1023	RAL Coca Cola	RAL 7042
RAL 6005	RAL 9011	RAL 5005	RAL 1015

- 1 Optional keder on bottom of wall for a perfect tension.
- 2 Backing and strap on the cross brace.
- 3 Reinforcement on the upper section.
- 4 Reinforcement and attachment with scissors.
- 5 Finish at the lowest point by Velcro. Fully hermetic tent.
- 6 Steel reinforcement in extremity of keder avoids tearing the fabric on intensive use.
- 7 Sliding wall on keder. KIM system®.
- 8 Reinforcement and attachment on each corner.

1



2



3



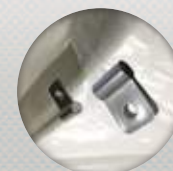
4



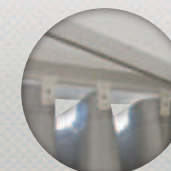
5



6



7



8





# ZP Range Pagoda shape



1



2



3



4

## Folding Pagoda : the revolution !

You asked for it, we built it: the entire folding pagoda. Avoid the constraints of setting by fitting system. LPTENT revolutionizes the shelter Pagoda with its models in XP and ZP ranges.

An undeniable time saving. No more tools, just space!



### LEGEND

- 1 Aluminium bracket + ZP system
- 2 Inside reinforcement by cables 3 Tension bar and cables
- 3 Sliding wall by keder system. [Quick set-up](#)

Blank wall



Completely opaque

Blank wall ouvert



With central ZIP

Semi-panoramic wall



With interior encased curtain

Window wall



French design

Door wall



Central door double ZIP  
fastener passage of 90cm

Emergency exit wall



Special Pagoda



Pike height  
5,10m

Height under flap  
2,50m

### PACK CONTENTS

Frame, simple PVC cover for frame, roof in PVC, reinforcement set (2 round tension bars, 4 cables), PVC bag for bars and cables.

	Weight	Surface	Height under flap
<b>ZP330</b> Pagoda	54kg	9 sqm	2,50m
<b>ZP440</b> Pagoda	63kg	16 sqm	2,50m
<b>ZP550</b> Pagoda	118kg	25 sqm	2,50m

# XP Range Pagoda shape

## SECURITY REGISTER



Delivered by the prefecture

Applicable regulations  
n°11 123.91 C.C.H.  
n°1 CTS 30  
step of 23.01.85

Based on XP and ZP ranges, our pagodas have all the qualities of these series with the so famous pointy hat design.

Listening to clients, LPTENT always offers technical advances adapted to your events.

Wall on sliding keder, patented system, **instant set-up**.

### LEGEND

- 1 Self-locking injected fiber glass corner lever
- 2 Injected fiber glass connector
- 3 Aluminium bracket to protect the fabric

#### Blank wall



Completely opaque

#### Open blank wall



With central ZIP

#### Semi-panoramic wall



With interior encased curtain

#### Window wall



French design

#### Door wall



Central door double ZIP  
fastener passage of 90cm

#### Emergency exit wall



Spécial pagode



### PACK CONTENTS

Frame, simple PVC cover for frame, roof in PVC.

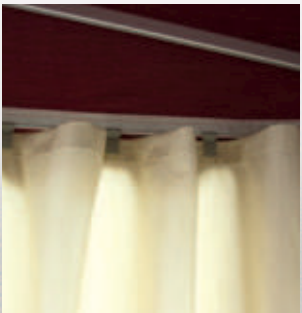
	Weight	Surface	Height under flap
XP330 Pagoda	38kg	9 sqm	2m

# The custom tents



## LP GARDEN

- › Available in **XP** and **ZP** range
- › Techniflex tarpaulin 260gr/sqm against-UV and waterproof
- › Semi-automatic set-up
- › Sliding walls system Kim ®



Brick

Yellow

Bordeaux

Green

Dark blue

Brown

Beige



## BAR TENT

- › 50cm Over-Roof
- › Available in **XP** and **ZP** Range
- › Optional counters and walls
- › **Pack content :**
  - Aluminum frame
  - 50cm Over-Roof
  - Nylon cover



## MARKET TENT

- › Made for street vendors
- › Design roof with awning
- › Available in **XP** and **ZP** Range
- › Optional counters and walls
- › **Pack content :**
  - Aluminum frame
  - Top with awning
  - Nylon cover







### RACING TENT

- › Available in ZP480 Range
- › 32sqm of working surface
- › Special races paddock
- › 4m Central door
- › Optional walls and printing
- › **Pack content :**
  - Frame ZP 4mx8m with 8 legs
  - PVC roof
  - Nylon cover



### SMOKING SPACE TENT

- › Usable inside and outside
- › Airing system on roof
- › Available in **XP** Range
- › Fully customizable
- › **Pack content :**
  - Aluminum frame
  - PVC roof
  - Nylon cover



### CHALET TENT

- › 2 sided roof
- › Available in diverse sizes and colors
- › Available in **XP** range
- › Perfect aesthetic result
- › Optional walls and printing
- › **Pack content :**
  - Aluminum frame
  - PVC roof
  - Nylon cover



# Options for tents

## ROOF AWNING

For a smart finish, we offer you a round or square awning to fix directly to the roof by Velcro.

ZP XP Colecti'V SLight ECO

## INTEGRATED AWNING

Perfect to cover your customers on markets and other events, the integrated cap includes an extra 75cm on a side.

ZP XP



## MULTICOLOR ROOF

Customize your roof with a maximum of 4 colors (1 color per side)

ZP XP Colecti'V

## AIRING OF ROOF

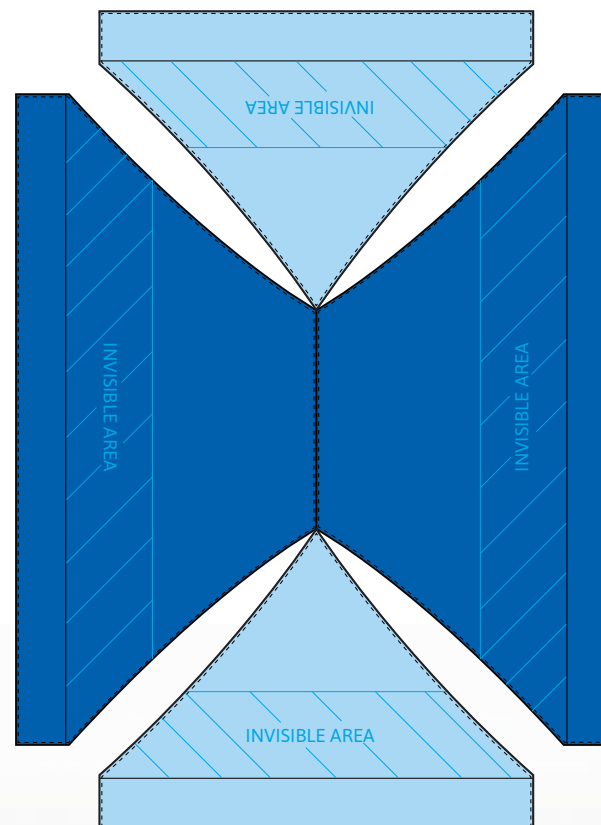
For an increased impact in case of violent wind, the airing lets the air escape out from the roof and reduces the sinking of wind effects under the shelter.

ZP XP Colecti'V SLight EGO

## ADDITIONAL HEIGHT

Move the frame to 2,20m.

XP Colecti'V





# 3D inspirations





EXPERIENCE THE CUSTOMIZING WITHOUT ANY LIMIT





# Starfull and inflatable shelters



## STARFULL

- › Available in PVC
- › Large surface
- › Fully customizable
- › 3 sizes available



## AIRMONSTER

- › PVC frame with internal PU with captive air
- › Frame made in PVC 740gr/sqm
- › Available in multiple colors



## AIRDESIGN

- › PVC frame with internal PU with captive air
- › Frame made in PVC 740gr/sqm
- › Available in multiple colour







### ARCH

- › PVC frame with internal PU with captive air
- › Frame made in PVC 740gr/sqm
- › 4 shapes available
- › Fully customizable
- › 100% waterproof or with assistance of inflation



\* or assisted



### RESCUE TENT

- › PVC frame with internal PU with captive air
- › PVC Fabric 740gr/sqm
- › Shape on custom
- › Fully customizable
- › 100% waterproof



### INFLATABLE TENTS ON CUSTOM

LP Tent manufactures on demand all shapes and sizes of inflatable tents. Contact us for details.

[All the inflatable tents are customizable.](#)



# STARFULL series

Ideal for outdoor events, the Starfull tents take up an impressive area for your receptions and marketing. The Starfull combines easy set-up with diverse functionalities aside from its many applications : smart party tent, meeting point during big events, demonstrating area, booth for exhibitions, promotional tent.

**Set-up in 30 minutes with 2 people.**

Compact and mobile packaging.

## LEGEND

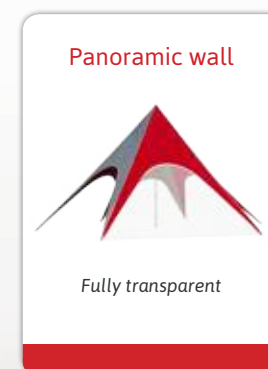
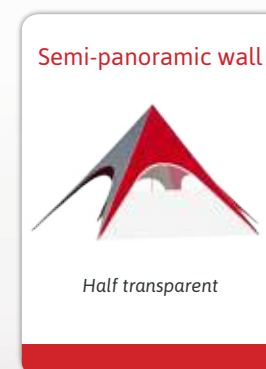
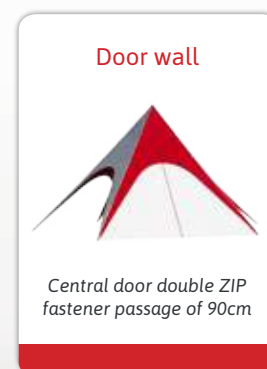
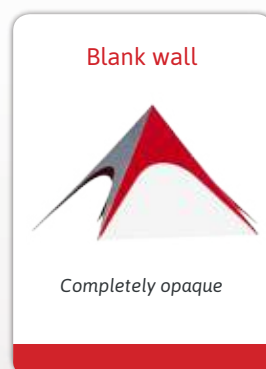
- 1** Aluminum pole
- 2** Optional ballasting for hard surface floor.  
Measurements : 50x50x50cm
- 3** Cover for ballasting
- 4** Crank handle
- 5** Triangle clamp supplied with the Starfull. Length : 50cm
- 6** Base
- 7** Fully customizable

## AVAILABLE SIZES

**ST900** Ø9m

**ST1300** Ø13m

**ST1700** Ø17m



	Weight	Seating area	Standing area	Covered space	Passage height	Pole height	Ø pole	Ground area
<b>ST900</b>	45kg	16	30	14,5 sqm	2,28m	5m	Ø62mm	23 sqm
<b>ST1300</b>	66kg	30	60	31 sqm	2,28m	5,1m	Ø62mm	44 sqm
<b>ST1700</b>	77kg	64	136	67 sqm	2,28m	5,9m	Ø62mm	97 sqm



WE REALIZE ALL DIMENSIONS  
ON DEMAND



#### PACK CONTENTS

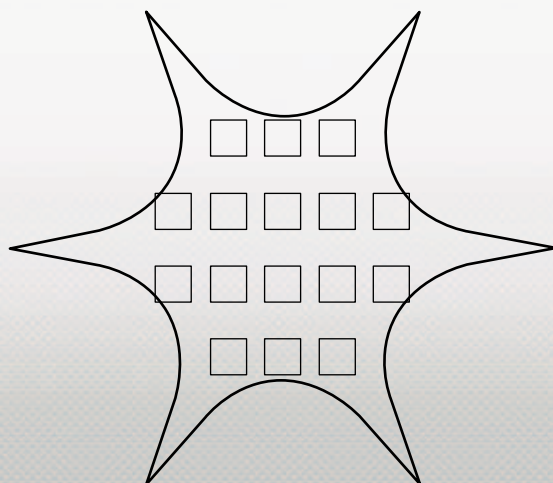
- › Central pole,
- › Fabric,
- › Reinforced carrying bag,
- › Rope set.

#### PVC COLORS

RAL 9016	RAL 1023
RAL 6005	RAL 9011
RAL Coca Cola	RAL 7042
RAL 5005	RAL 1015
	RAL 2007

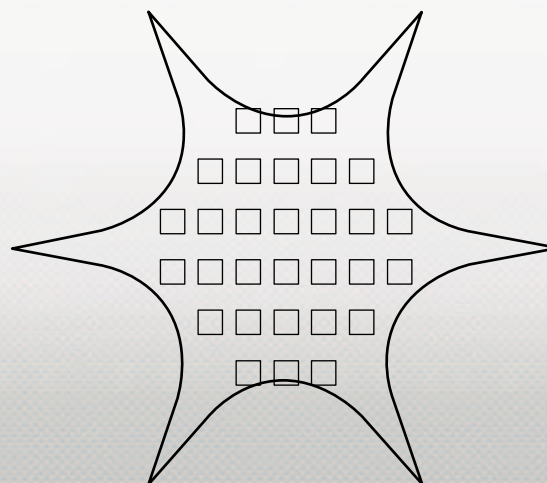
**ST900** Ø9m

16 SEATING CAPACITY



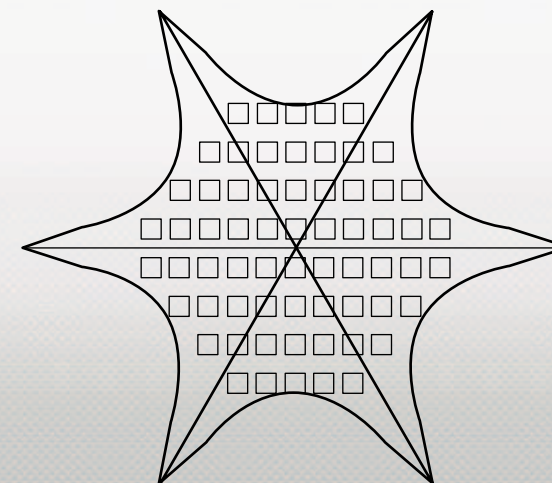
**ST1300** Ø13m

30 SEATING CAPACITY



**ST1700** Ø17m

64 SEATING CAPACITY





# AIRMONSTER Serie

Classical shape but impressive for a visual impact with no equal on your events, the Air Monster is fully printable to your colors on its entire surface. The Air-Monster PVC is fully water proof and fire retardant M2. With this customizable quadruped, it leaves no one indifferent. Impossible to miss you!

The inflatable tubes are in **PVC 740gr/sqm**.

The fabric is available in Ristop, Technitex nylon **300gr/sqm** or **PVC 380gr/sqm**.

**WE REALIZE ANY DIMENSIONS ON DEMAND.**

## LEGEND

- 1** Central hook system
- 2** Inflation valve
- 3** Finish with Velcro
- 4** Integrated anchor system
- 5** Easy lock
- 6** Automatic depressurization system

## AVAILABLE SIZES

**RM3M** 3mx3m 7,9 sqm

**RM4M** 4mx4m 11,3 sqm

**RM5M** 5mx5m 18,8 sqm

**RM6M** 6mx6m 28,4 sqm

### Simple door wall



Central ZIP

### Double door wall



Door wall with central door passage 100cm

### Semi-panoramic wall



Half transparent

### Blank wall



Completely opaque

### Panoramic wall



Fully transparent

### Awning



Optional printing

### Fabric joint



Ensures connection between 2 tents

	Weight	Total height	Door height	Door width	Tube diamètre	Surface
<b>RM3M</b> 3mx3m	22kg	2,6m	2m	2,8m	Ø 0,3m	7,9 sqm
<b>RM4M</b> 4mx4m	26kg	3,1m	2,1m	3,8m	Ø 0,35m	11,3 sqm
<b>RM5M</b> 5mx5m	37kg	3,4m	2,2m	4,8m	Ø 0,4m	18,8 sqm
<b>RM6M</b> 6mx6m	45kg	4m	2,5m	5,8m	Ø 0,45m	28,4 sqm

## PACK CONTENTS

- › Your Air Monster,
- › Its carrying bag,
- › Its rope set,
- › Its repair kit,
- › Its installation instructions,
- › Its repair instructions.



**PVC FRAME WITH INTERNAL  
PU WITH CAPTIVE AIR**  
External wall in PVC 740gr/sqm



## OPTIONAL AWNING



## INFLATABLE TUBES COLORS

RAL 9016	RAL 9011
PANTONE 7461C	PANTONE 1795C
PANTONE 108C	PANTONE 7687C
COOL GRAY 8C	PANTONE 166C
	PANTONE 3288C

## PVC FABRIC COLORS

RAL 9016	RAL 1023
RAL 6005	RAL 9011
RAL Coca Cola	RAL 7042
RAL 5005	RAL 1015
	RAL 2007

## TECHNITEX FABRIC COLORS

RAL 9016	RAL 9016
RAL 3020	RAL 6011
	RAL 5014

## RISTOP COLOR

RAL 9016
----------





# AIRDESIGN Series

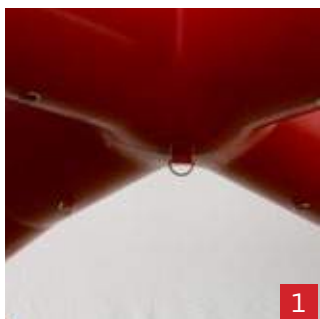
With a refined profile, the Air Design offers a large choice of options and customizations providing an innovative style to your event. The inflatable tubes are in PVC 740gr/sqm. The fabric is available in qualities Ristop, Technitex 300gr/sqm or PVC 380gr/sqm.

## LEGEND

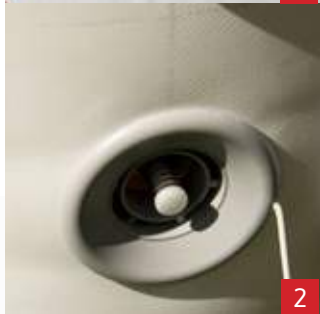
- 1** Central hook system
- 2** Inflation valve
- 3** Finish with Velcro
- 4** Integrated anchor system
- 5** Easy lock
- 6** Automatic depressurization system

## AVAILABLE SIZES

- RD3M** 3mx3m 7,9 sqm
- RD4M** 4mx4m 11,3 sqm
- RD5M** 5mx5m 18,8 sqm
- RD6M** 6mx6m 28,4 sqm



1



2



3



5



4



6

### Door wall simple



Central ZIP

### Double door wall



Door wall with central door passage 100cm

### Semi-panoramic wall



Half transparent

### Blank wall



Completely opaque

### Panoramic wall



Fully transparent

### Awning



Optional printing

### Fabric connection



Ensures connection between 2 tents

	Total height	Door height	Tube diamètre
<b>RD3M</b> 3mx3m	2,6m	2m	Ø 0,26m
<b>RD4M</b> 4mx4m	2,6m	2m	Ø 0,26m
<b>RD5M</b> 5mx5m	3,2m	2,5m	Ø 0,33m
<b>RD6M</b> 6mx6m	3,9m	3m	Ø 0,40m



**OPTIONAL : CHOICE OF FEET  
AND INSIDE CROSS COLORS**



**PVC FRAME WITH INTERNAL  
PU WITH CAPTIVE AIR**

External wall in PVC 740gr/sqm

#### PACK CONTENTS

- › The GCOM of your choice,
- › Its carrying bag,
- › Its rope set,
- › Its repair kit,
- › Its installation instructions,
- › Its repair instructions.

#### INFLATABLE TUBES COLORS

RAL 9016	RAL 9011
PANTONE 7461C	PANTONE 1795C
PANTONE 108C	PANTONE 7687C
COOL GRAY 8C	PANTONE 166C
	PANTONE 3288C

**EDGING OF OUTLINE FOR A PERFECT  
AESTHETICAL RESULT**

#### PVC FABRIC COLORS

RAL 9016	RAL 1023
RAL 6005	RAL 9011
RAL Coca Cola	RAL 7042
RAL 5005	RAL 1015
	RAL 2007

**WE REALIZE ALL SIZES ON CUSTOM**



#### TECHNITEX FABRIC COLORS

RAL 9016	RAL 9016
RAL 3020	RAL 6011
	RAL 5014

#### RISTOP COLOR

RAL 9016

# ARCH Series

## Inflatable Round GCOM



	Weight	Tube Ø	Inner width	inner height	Printable surface on side	Printable surface on top
<b>GR4M</b>	19kg	0,5m	4m	3,2m	0,97x0,42m	1,92x0,46m
<b>GR6M</b>	29kg	0,6m	6m	4,5m	1,54x0,60m	3,04x0,69m
<b>GR8M</b>	43,5kg	0,8m	8m	4,8m	2,02x1,16m	2,54x1,31m
<b>GR10M</b>	63,5kg	1m	10m	5,5m	4,07x0,89m	5,11x1,06m

## Inflatable square GCOM



	Weight	Tube Ø	Inner width	inner height	Printable surface on side	Printable surface on top
<b>GS4M</b>	22kg	0,5m	4m	3,2m	2,80x0,37m	3,40x0,37m
<b>GS6M</b>	36kg	0,6m	6m	4,5m	4,05x0,49m	5,30x0,49m
<b>GS8M</b>	54kg	0,8m	8m	4,8m	4,25x0,74m	7,10x0,74m
<b>GS10M</b>	80kg	1m	10m	5,5m	4,85x0,99m	8,90x0,99m

## Inflatable 5 sides GCOM



	Weight	Tube Ø	Inner width	inner height	Printable surface on side	Surface imprimable milieu	Printable surface on top
<b>GS54M</b>	21kg	0,5m	4m	3,2m	2,00x0,37m	1,17x0,37m	2,09x0,37m
<b>GS56M</b>	31kg	0,6m	6m	4,5m	3,10x0,49m	1,49x0,49m	3,65x0,49m
<b>GS58M</b>	46kg	0,8m	8m	4,8m	3,00x0,74m	2,30x0,74m	4,12x0,74m
<b>GS510M</b>	67kg	1m	10m	5,5m	3,45x0,99m	2,88x0,99m	5,07x0,99m

## Inflatable Double 5 sides GCOM



	Weight	Tube Ø	Inner width	inner height	Printable surface on side	Surface imprimable milieu	Printable surface on top
<b>GS5D4M</b>	45kg	0,5m	4m	3,2m	2,00x0,37m	1,17x0,37m	2,09x0,37m
<b>GS5D6M</b>	70kg	0,6m	6m	4,5m	3,10x0,49m	1,49x0,49m	3,65x0,49m
<b>GS5D8M</b>	101kg	0,8m	8m	4,8m	3,00x0,74m	2,30x0,74m	4,12x0,74m
<b>GS5D10M</b>	144kg	1m	10m	5,5m	3,45x0,99m	2,88x0,99m	5,07x0,99m



**PVC FRAME WITH INTERNAL  
PU WITH CAPTIVE AIR**

External wall in PVC 740gr/sqm

## PACK CONTENTS

- › The ARCH of your choice,
- › Its manual pump,
- › Its carrying bag,
- › Its Rope set,
- › Its repair kit,
- › Its installation instructions.

## INFLATABLE TUBES COLORS

RAL 9016	RAL 9011
PANTONE 7461C	PANTONE 1795C
PANTONE 108C	PANTONE 7687C
COOL GRAY 8C	PANTONE 166C
	PANTONE 3288C

Make sure your brand is first at the finish line with our **inflatable GCOM**.

The LPTENT Inflatable Arch is the ideal start or finish line marker for your next sporting event.

Easy to carry and set-up, the **GCOM in PVC 740gr/sqm** fabric are fire retardant M2. We have understood your needs and elaborated our products accordingly. You need to distinguish yourself, to work in full mobility, to welcome guests... for each request, we have the solution. Our products are 100% waterproof, designed with a range of hermetic fabrics. The inflation is made in one point. No air-loss.





# Rescue Tent

## Finally, emergency has its structure!

Innovative and inflatable frame, easy to set-up, it will be the perfect cover for emergency staff. An immediate use when time is short. Easy to move with its carrying bag, it can be loaded into a car trunk. The airings enable its use even if the tent is totally close. Opening with a ZIP on the entire width.

WE REALIZE ANY DIMENSIONS ON DEMAND.

CUSTOMIZABLE COVER FABRIC



### PACK CONTENTS

- › Inflatable PVC frame,
- › Tarp cover,
- › Carrying bag.

### PVC TUBE COLORS

RAL 9016	RAL 9011
PANTONE 7461C	PANTONE 1795C
PANTONE 108C	PANTONE 7687C
COOL GRAY 8C	PANTONE 166C
	PANTONE 3288C

### PVC FABRIC COLORS

RAL 9016	RAL 1023
RAL 6005	RAL 9011
RAL Coca Cola	RAL 7042
RAL 5005	RAL 1015
	RAL 2007



# Size on demand and customizable

A professional or leisure project, a need for mobility for an activity: we have the fitted product!

We realize on demand your inflatable tent: fabric, size and shape on custom. From the sketch to the prototype, you will follow step by step the progress of your project. Previously held back by capacity or distance: the inflatable tents are the solution. You'll finally be able to meet your customers and welcome them on selected areas and move your working tool.

## CUSTOMIZABLE COVER FABRIC



**PVC FRAME WITH INTERNAL  
PU WITH CAPTIVE AIR**

External wall in PVC 740gr/sqm

### PVC FABRIC COLORS

RAL 9016	RAL 1023
RAL 6005	RAL 9011
RAL Coca Cola	RAL 7042
RAL 5005	RAL 1015
	RAL 2007





# Tent accessories

## SECURITY



### Simple Weight

Simple weight, using for ECO, S light and Colecti'v ranges. Or complementary to PRO weight on ZP and XP ranges. Weight 15kg.

ZP XP Colecti'v Slight ECO



### Lest'O 45L customizable

Easy to carry and space-saving, the Lest'O allows to tether your tent (optional straps). Lest'O in PVC with filling capacity of 45L. Empty weight less than 900gr.

ZP XP Colecti'v Slight ECO



### Lest'O 75L or 100L customizable

Easy to carry and space-saving, the Lest'O allows to easily fix your tent (optional straps). Available in 2 capacities : 75L or 100L.

ZP XP Colecti'v Slight ECO



### PRO Weight

Technic ballasting 15kg allows you to join 4 tents together. Possibility to increase the weight with a simple ballast.

ZP



### Rope Kit

Additional Rope Kit for ground with low pullout density. 4 pegs, 4 straps, 4 clevises.

ZP



### Connecting weight ZP HEXA

Weight to connect two or three ZP hexagonal tents together. Incompatible with ZP tents square or rectangular shapes.

ZP



### Stake anchor

Stake sold individually, for perfect anchoring of your tent. Length 50cm, Ø25 mm. Possibility of an optional carrying bag.

ZP







### Stretcher bar

Tension bar in aluminum with connection by clips, allows an optimal tension of wall and reinforce the frame. Supplied with protecting bag. 2 or 3 parts according size (2m, 3m, 4m, 4m50).

ZP XP Colecti'V Slight ECO



### Automatic anchoring system

Fixed and sealed to the ground. Fixing by simple pressure. High security of public, the tents are fixed. No more weight to save space.

ZP XP Colecti'V Slight ECO



### Counter Aluminum

Counter with a tray 35cm wide, delivered with a skirt and carrying bag. Dimension : 2m, 3m, 4m, 4m50. Fast set up.

ZP XP



### Tent cap / Awning

We offer an optional cap, to shelter your customers. This awning folds automatically. Length 50cm. Colors of your choice.

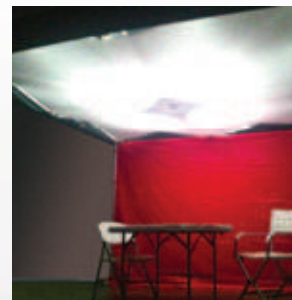
ZP XP Colecti'V Slight ECO



### Flag stand

Allows to fix a flag directly to the frame. For a dynamic visual.

ZP XP



### Velum Acrylic

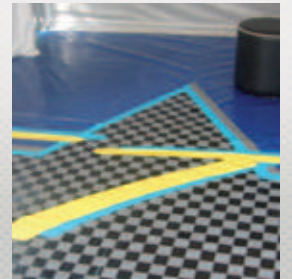
Part to hide the top of frame. Aesthetically perfect.

ZP XP Colecti'V Slight ECO

### Ground cover

For a perfect finish. All size. PVC Fabric 700 gr/m2 eyelet every 40 cm. Colours: blue or grey. Supplied with carrying bag.

ZP XP Colecti'V Slight ECO



# Tent accessories



## Cord lead

Allows running the cords along profiles and scissors.  
For a perfect aesthetic visual. Sold as a set of 10 A and 10 B.

ZP XP



## Carrying bag with reinforced trolley

The ZP case consists of a trolley combined with a thick PVC storage bag supported by straps. All sizes.

ZP



## Carrying bag with retractable wheels

PVC cover 700gr in 2 parts: cover and trolley with retractable wheels. Ergonomic handles. All sizes.

XP



## Flight case

Allow the transport of all our folding tents and inflatable models.  
Possibility of custom sizes.

ZP XP Colecti'v Slight ECO



## PVC cover 700gr reinforced

Colecti'v bag made with PVC fabric reinforced 700gr/sqm with straps. Pocket for rope kit (Rope set sold separately).  
Measurements : 3mx3m, 3mx4.5m, 3mx6m and 4mx4m.

Colecti'v



## Transport rack

Transport rack for a maximum of 10 3mx3m tents with wall packs and ballasting (4 ballasting for a tent).

ZP XP Colecti'v Slight ECO



## Simple PVC carrying bag

Carrying bag in PVC. All sizes available.

ZP XP Colecti'v Slight ECO

# MODULARITY



## Interlocking ground

Technic floor, easily interlocking.  
Resistance + 150 kg/ sqm. Perfect aesthetic visual.

ZP XP Colecti'V Slight ECO



## Gutter PVC connection

For a perfect aesthetic finish, enables water tightness between two tents and can be installed with the rigid connection.

ZP XP Colecti'V Slight ECO



## Rigid connection

The rigid connector allows 2 tents to be connected together.

ZP XP Colecti'V Slight ECO



## Soft connection For a perfect finishing,

Allow waterproofing between two tents, can be set up with the rigid connection.

ZP XP



# COMFORT



## Spot LED 4x10 watts 4x1000 lumens.

Multi-directional Spotlight to be placed on the center peak pole.  
For interior use.

ZP XP Colecti'V Slight ECO



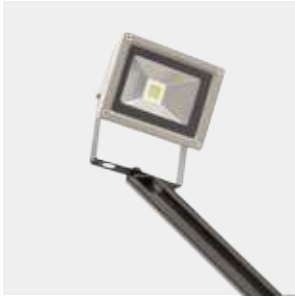
## Spot LED 1x10 watts 1000 lumens

Multi-directional 10 watts LED spotlight fixed to the frame.  
For interior use.

ZP XP Colecti'V Slight ECO



# Tent accessories



## 1 x 10 watts LED exterior spotlight

Multi-directional Spotlight to fix on the pole, for an exterior lighting. Delivered with a carrying bag when two units are ordered.

ZP XP



## Infra-Red heating system

IR heating system to be fixed to the mast of the tent. Available in 1500W and 2000W of immediate heat.

ZP XP Colecti'V Slight ECO



## 4 x 150 watts interior spotlight

To be placed on the center of the peak pole. The four spotlights can be directed individually. Delivered with a bag.

ZP XP Colecti'V Slight ECO



## 1 x 150 watts interior spotlight

Multi-directional 150 watts spotlight fixed to the frame. Delivered with a carrying bag when two units are ordered.

ZP XP Colecti'V Slight ECO



## Soft PVC weight for inflatables

Capacity 30 liters.

AIR TENT ECOM



## 1 x 150 watts exterior spotlight

Multi-directional Spotlight to fix on the pole, for an exterior lighting. Delivered with a carrying bag when two units are ordered.

ZP XP



## Metal weight

Supplied with cables and snap hooks. Weight : 15Kg.

AIR TENT ECOM



### Manual pump

Volume : 2x2500cc Frame in ABS quality Measurements :  
21x12x47cm Pressure : 600 mBar (8.7cpsi)

**AIR**TENT **ECOM**



### Blower T0

To connect on battery 12v Can be used everywhere in a car.  
Voltage: 12V Consumption: 45-60 A max. Airflow : 1000l/min  
Pressure : 250mBar (3.6 psi)

**AIR**TENT **ECOM**



### Electric blower T2 (1 or 2 totems)

Voltage: 230V Power : 750 W Airflow : 800l/min  
Pressure : 190mBar (2.8 psi)

**AIR**TENT **ECOM**



### Electric blower T3

Voltage: 230V Power : 1100 W Airflow : 1500l/min  
Pressure : 230mBar (3.3 psi)

**AIR**TENT **ECOM**



### Electric blower T4

Voltage: 230V Power : 1000 W Airflow : 1800l/min  
Pressure : 230mBar (3.3 psi)

**AIR**TENT **ECOM**



### Electric blower T5

with regulator Rapid inflation, automatic control of pressure  
Voltage : 230 V. Power : 2000 W Air flow : 2000 l/min.  
Pressure : 50/450 mBar (0.7 / 6.5 psi)

**AIR**TENT **ECOM**



### Weight for Starfull

Allows to use your Starfull on hard flooring (ex : tarmac) Concrete  
stud sold separately.

**STARFULL**



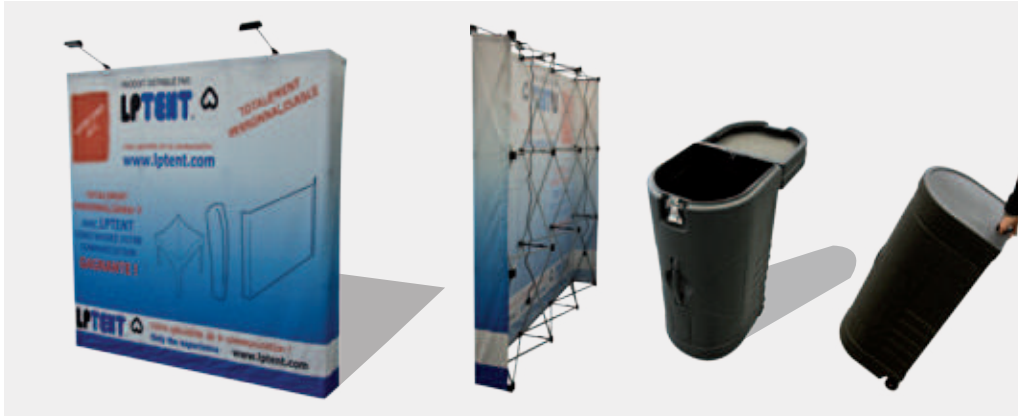
### Concrete block 70kg

Stackable block, perfect for a long-term use or windy events.  
Supplied with its handling bar (strap sold separately).

**ALL PRODUCTS**

# Communication supports

## STRAIGHT image wall



### The essential accessory for your stand or event.

The image wall allows to highlight your logo, trademark or visual on the space you are. Sublimation printing on seamless wall. Printed corners. Aluminium straight frame.

#### Straight model with Velcro.

Optional spotlights and flightcase.

**MID230** Length : 200cm Height : 300cm

**MID330** Length : 300cm Height : 300cm

**MID430** Length : 400cm Height : 300cm

#### PACK CONTENTS

- › Frame,
- › Fabric and printing,
- › Nylon bag.



1



2



3

- 1 Technical frame.
- 2 Optional lighting.
- 3 Fabric fixed to the frame by Velcro.

## Image wall STYLE



### The image wall allows to highlight your logo, trademark or visual on the space you are.

Sublimation printing on seamless wall. Printed corners. Curved aluminium frame. Magnetic fixing.

#### Supplied with customization.

Optional spotlights and flightcase.

**VAG230** Length : 200cm Height : 300cm

**VAG330** Length : 300cm Height : 300cm

**VAG430** Length : 400cm Height : 300cm

#### PACK CONTENTS

- › Frame,
- › Fabric and printing,
- › Nylon bag.



1



2

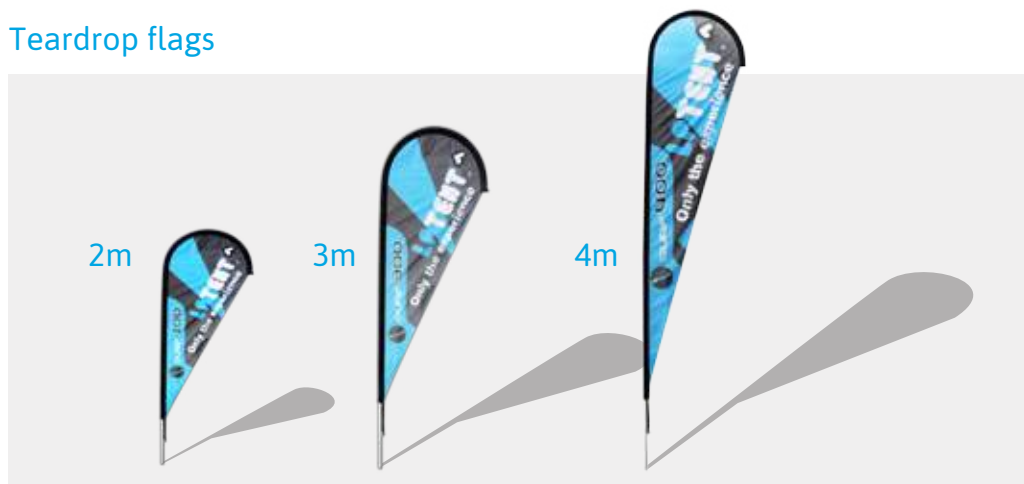


3

- 1 Technical frame.
- 2 Optional spotlights and flightcase.
- 3 Meeting tray. Can be used as a stage. Handle for transport.



## Teardrop flags



The **Teardrop flags** are made in aluminium pole 28mm, thickness 1.5mm, with a fibre glass 6 or 4mm on the extremity. **Ending of fabric made with black elastic rope.**

Teardrop flags are supplied with : Pole, Flag, Printing, Base 1mx1m 10kg.

**SURF200** Height 2m Printable area 150x60cm

**SURF300** Height 3m Printable area 220x90cm

**SURF400** Height 4m Printable area 340x90cm



1



2



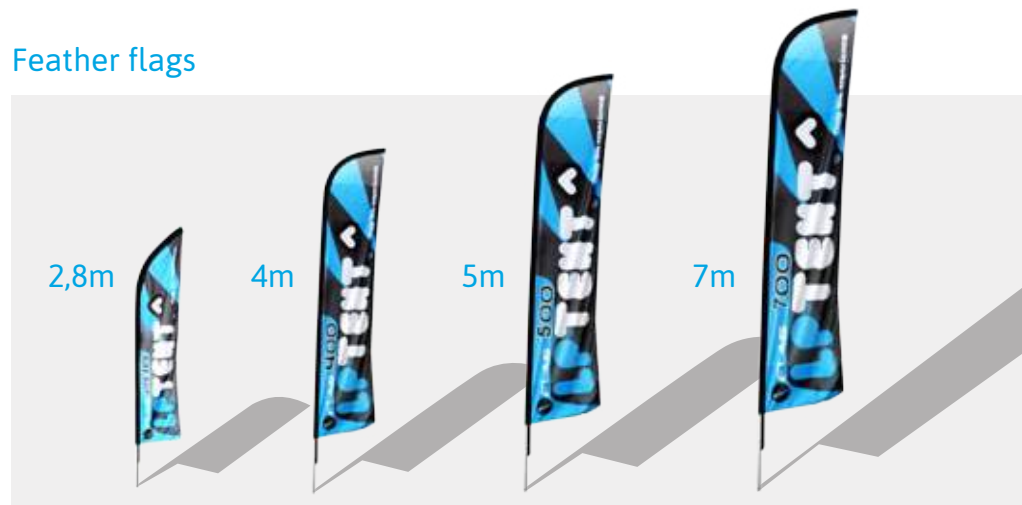
3

1 Foldable base.

2 Can be fixed on the frame of the tent for a dynamic visual.

3 Teardrop flags in situation.

## Feather flags



The Feather flags are made in aluminium pole 28mm, thickness 1.5mm, with a fibre glass 6 or 4mm on the extremity. Ending of fabric made with black elastic rope.

Our Feather flags are supplied with : Pole, Flag, Printing, Base 1mx1m 10kg.

**FLAG200** Height 2,8m Printable area 230x50cm

**FLAG400** Height 4m Printable area 330x70cm

**FLAG500** Height 5m Printable area 450x85cm

**FLAG700** Height 7m Printable area 630x120cm



1



2



3

1 Foldable base.

2 Can be fixed on the frame of the tent for a dynamic visual.

3 Feather flags in situation.

# Communication supports

## TOTEM



### PACK CONTENTS

- › Printed Totem,
- › Its shelf,
- › Its carrying bag.

- TOTEM1002** Ø 1m Height 2m  
**TOTEM1003** Ø 1m Height 3m  
**TOTEM5302** Ø 0,53m Height 2m  
**TOTEM5303** Ø 0,53m Height 3m



- 1 TOTEM in situation.  
 2 Optional manual pump and electric pump, cf page 48.  
 3 TOTEM Alltricks.

## CUBCOM

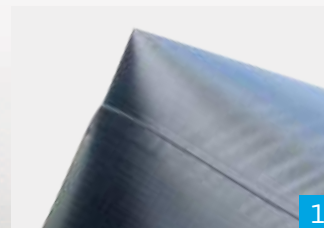


Indoor/Outdoor communication tool To be the star of your event !

- CUBCOM100** 1m square  
**CUBCOM150** 1,5m square  
**CUBCOM200** 2m square

1m side square Measures on request.  
 Optional pump.

Fully customizable.



- 1 High quality PVC fabric .

## ROLL-UP



The Roll-up have a 200x85cm printable area.  
Their weight is 2.4Kg.  
The opening is instantaneous, up to 2 meters in height.

Available in coated PVC. 370 to 700gr Polyester frame.  
The Highly resistant PVC is the alone printable support.



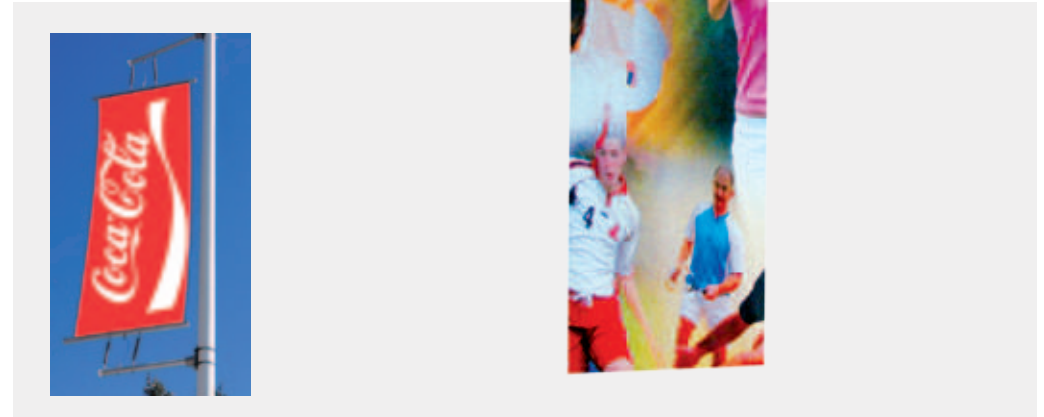
1



2

- 1 Fully customizable.
- 2 Storage by wrapping.

## Kakémono



A Kakémono is a printable fabric to hang up. It is made rigid by one or two wood rails at top or/and bottom. It can be suspended against a wall or a frame (stand, metallic pole etc...).

The printing on them is made on different fabrics to be adapted to confines and wishes of our clients. This product can be treated fire-retardant for an indoor use (M1 said "non-flammable").

2 Support types are available :

**Satinette** : fabric with shining satine aspect.

**Supralon** : lock stitch, 100% polyester 115gr/sqm.



1

- 1 Fixing by bracket.



# Communication supports

## VISION Barrier



**It is fully customizable.**

Easy assembly and possibility to stack together once upon another. It is supplied with its Aluminium frame and PVC fabric. Optional printing. Possibility to pick on the ground.

**Printable area : width 200cm, height 80cm.**



1



2



3

- 1 Carrying bag.
- 2 Handle.
- 3 Perfect aesthetic finishing.



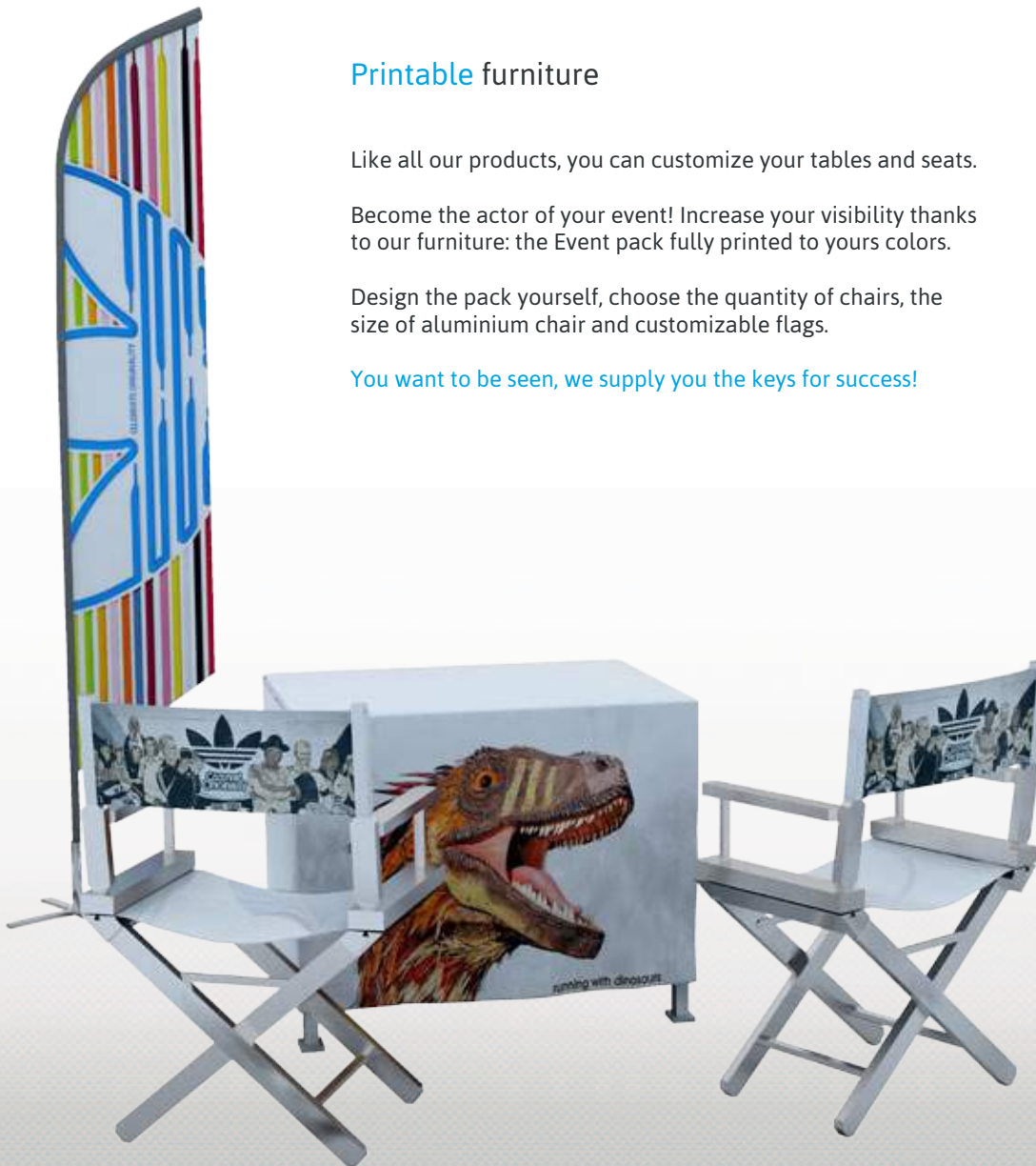
## Printable furniture

Like all our products, you can customize your tables and seats.

Become the actor of your event! Increase your visibility thanks to our furniture: the Event pack fully printed to yours colors.

Design the pack yourself, choose the quantity of chairs, the size of aluminium chair and customizable flags.

You want to be seen, we supply you the keys for success!





# Printable and inflatable furniture Bubblebut®

Fully customizable furniture: judicious !

New from LPTENT. Fully printable, the inflatable furniture Bubblebut will offer you a simple logistic and a complementary and optimal visibility to your events.

After the GCOM arches, Airtents, Totems and Cubcom, the furniture has no lack of air with LPTENT!







Choose your seat or support, our design department helps and advise you to realize the final visual.

#### Full sets

##### Inflatable tool **Mini-But pack**

› Inflatable tool frame + PU inner tube.

##### Inflatable coffee table **Table-But pack**

› Inflatable coffee table frame + PU inner tube.

#### **Fat-But**, tool shape

Inflatable Fat-But frame 41x71cm

Nylon cover for Fat-But + sublimation printing

Imitation leather Polybag cover for inflatable Fat-But\*

#### **Little-But**, seat shape

Inflatable Little-But frame 74x75x88cm

Nylon cover for Little-But gonflable + sublimation printing

Imitation leather Polybag cover for inflatable Little-But\*

#### **Chill-But**, transat shape

Inflatable Chill-But frame 180x75x63cm

Nylon cover for Chill-But + sublimation printing

Imitation leather Polybag cover for inflatable Chill-But\*

#### **Big-But**, sofa shape

Inflatable Big-But frame 150x68x79cm

Nylon cover for Big-But + sublimation printing

Imitation leather Polybag cover for inflatable Big-But\*

#### **Rocking-But**, chair shape

Inflatable Rocking-But frame 92x82x82cm

Nylon cover for Rocking-But + sublimation printing

Imitation leather Polybag cover for inflatable Rocking-But\*

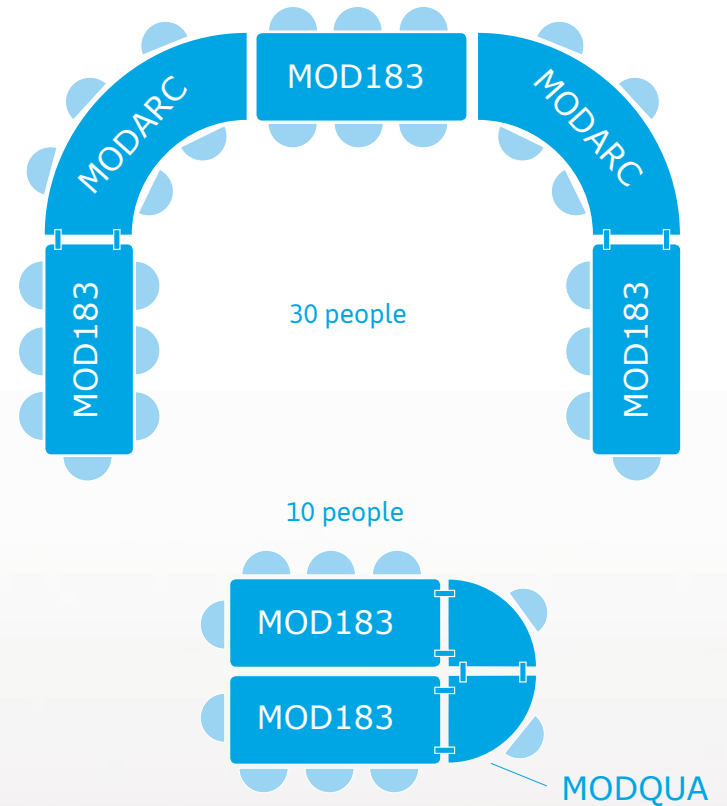
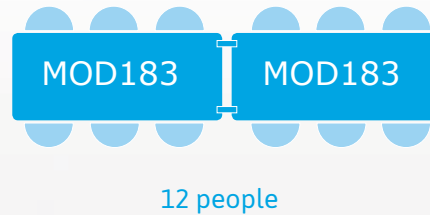
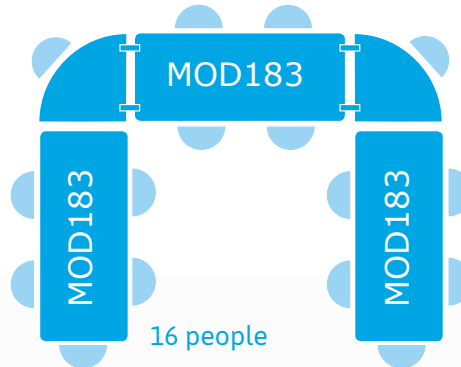
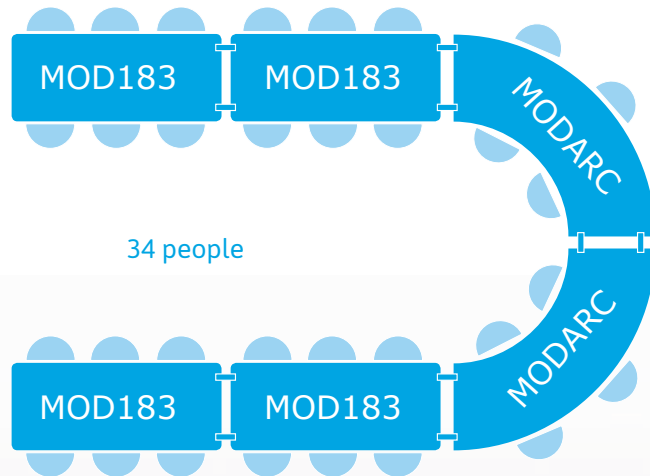
\* Optional embroidery

# Furniture

## MODULO RANGE

Specially designed for receptions !

With the Modulo range, all is possible! Endlessly combine them as you wish. Specially made for your receptions, this set will enjoy the individuals as well as the city halls and collectivities.



### Modulo arc

Table with angular or circular joining system. Increases the variety of possible compositions with rectangular and circular tables.

Ref : MODARC

Measurements : **166 x 166 x 74cm**  
 Net weight : **18 kg**  
 Capacity : **3/4 people**  
 Panel thickness : **5,1 cm**  
 Maximum weight supported : **170 kg**



### Straight Modulo 152cm and 183cm

Table with transverse joining system. Ideal for square and infinite compositions with great sturdiness. Sliding ring to lock the legs in position when in use. Easy and secure. Available in 152cm and 183cm.

Ref : MOD152

Ref : MOD183

#### Straight Modulo 152

Measurements : **152 x 76 x 74cm**

Weight total : **12 kg**

Capacity : **4 people**

Panel thickness : **4,5 cm**

Recommended maximum weight : **150 kg**

#### Straight Modulo 183

Measurements : **183 x 76 x 74cm**

Net weight : **14 kg**

Capacity : **6 people**

Panel thickness : **4,5 cm**

Maximum weight supported : **170 kg**



### Fix tray Table 183 NORTHMA ®

Essential for your indoor and outdoor evenings, this table is versatile and highly robust, easy to stack and carry. Length 183cm.

Ref : TAF183

Measurements : **183 x 76 x 74cm**

Net weight : **14 kg**

Capacity : **6 people**

Panel thickness : **4,5 cm**

Recommended maximum weight : **170 kg**



### Table 183 with folding tray NORTHMA

Essential for your indoor and outdoor evenings, this table is versatile and highly robust, easy to stack and carry.

Ref : TAVA183

Length : **183 cm**

Width : **76 cm**

Height : **74 cm**

Weight : **15 kg**

Capacity : **7/8 people**

Top : **high strength polyethylene**

Maximum weight supported : **150 kg**



### Angle folding Modulo

Table with angular joining system. Increases the range of possible compositions with rectangular tables.

Ref : MODQUA

Measurements : **75 x 75 x 74cm**

Net weight : **6,6 kg**

Capacity : **1 personne**

Panel thickness : **4,5 cm**

Recommended maximum weight : **100 kg**



# Furniture



## Round folding table for catering.

Manual lock and sliding ring for greater leg stability when in use. Ergonomic crosspieces for greater comfort. Tray in high resistance polyethylene. Legs in painted steel. Colors : dark grey or white. Easy to stack and carry. Light and easy to fold and store. Tray in high density polyethylene. Frame in painted epoxy steel.

Height : **74 cm**  
Thickness of tray : **4,5 cm**

Available in sizes : **Ø 122cm** Capacity : **4 personnes** Weight : **17 kg** Ref : **TRP122**  
**Ø 150cm** Capacity : **7 people** Weight : **21 kg** Ref : **TRP150**  
**Ø 180cm** Capacity : **12 personnes** Weight : **25 kg** Ref : **TRP180**



## Light and easy to fold and store.

Tray in high density polyethylene. Frame in painted epoxy steel.

Ref : **MODTC**

Diameter of tray : **81 cm**  
Thickness of tray : **4,5 cm**  
Height : **110 cm**  
Weight : **8 kg**  
Maximum weight supported : **110 kg**



## Cocktail high chair

High-density polyethylene and powder coated steel folding stool. Suitable for intense public use. We recommend 3 bar chairs for 1 high table Cocktail.

Ref : **MODCC**

Seat height : **74 cm**  
Total height : **104 cm**  
Length : **49 cm**  
Width : **48 cm**  
Weight : **5,7 kg**  
Recommended maximum weight : **120 kg**



## Folding chair CPO NORTHMA ®

Stackable chair. Special for receptions, concerts, meetings. Steel frame, plastic back and seat.

Ref : **CP01**

Length : **44 cm**  
Width : **45,3 cm**  
Height : **80,5 cm**  
Weight : **4 kg**  
Recommended maximum weight : **110 kg**



### Folding chair INFINITY STEEL

Folding chair manufactured from pipe and 0.8 mm powder coated steel plate. Suitable for intense public use. Available in silver grey.

Ref : MCPINFS

Length : **44 cm**

Width : **45,3 cm**

Height : **80,5 cm**

Weight : **4 kg**

Recommended maximum weight : **110 kg**



### Folding chair LIGHT NORTHMA ®

Ultra-light folding chair, made with plastic and steel.

Ref : CPLG01

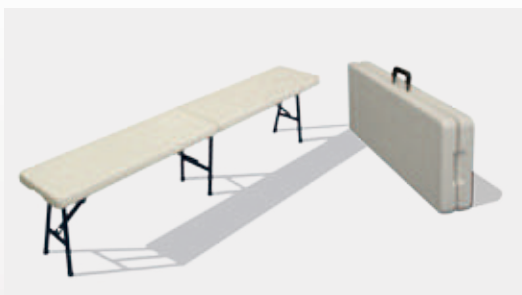
Length : **43 cm**

Width : **45 cm**

Height : **80 cm**

Weight : **2,7kg**

Recommended maximum weight : **110 kg**



### Folding bench 183 NORTHMA ®

Painted epoxy metal alloy frame, injected nylon tray. Professional quality. Sand color.

Ref : BP01

Measurements : **183 x 30 x 43 cm**

Net weight : **6 kg**

Seating : **4**

Thickness of tray : **4,8 cm**

Recommended maximum weight : **150 kg**



### Chair brilliant with joining system

- Optional fire retardant tissue
- Seat foam thickness : 5 cm / density 60 kg/cbm
- Back foam thickness: 2cm/density 22kg/cbm
- Color of back and seat : blue or red

Ref : CBACC

- Painted epoxy metal alloy frame, injected nylon tray. Professional quality. Sand color.
- Chair brilliant with joining system. Optional fire retardant tissue.

Seat height : **47 cm**

Back height : **93 cm**

Depth of the chair : **51 cm**

Chair width : **44 cm**

Depth of seat : **40 cm**

Chair width : **38,5 cm**

Weight : **6kg**

# Furniture



## Aluminium folding table

Supplied with reinforced carrying bags. Injected fibreglass connectors. Assembled by simple interlocking in seconds. Heavy-duty and great durability. Two possible heights: 80cm and 110cm. Perforated metal alloy tray. Optional customizable table cover.

Size of tray alone : **100 x 60 x 2cm**  
Tray weight : **5 kg**  
Size with legs folded : **17 x 15 x 78 cm**  
Foot Weight : **5,2 kg**

Ref : FT1



## Aluminium folding table

Supplied with reinforced carrying bags. Injected fibreglass connectors. Assembled by simple interlocking in seconds. Heavy-duty and great durability. Two possible heights: 80cm and 110cm. Perforated metal alloy tray. Optional customizable table cover.

Size of tray alone : **196 x 60 x 2cm**  
Tray weight : **12 kg**  
Size with legs folded : **30 x 15 x 78 cm**  
Foot weight : **8,2 kg**

Ref : FT2



## Brasserie Pack

Specifically designed for outdoor use on soft ground. Brown tray, green corrosion-resistant angle base Ø 20mm x 40mm x 1.1mm. Maximum recommended load: 200kg.

Ref : MODMUN

### Table characteristics :

Tray : **anti-UV HDPE**  
Capacity : **8 people**  
Tray : **220cm x 67cm**  
Thickness : **50mm**  
Height : **77cm**  
Weight : **18,3kg**

### Bench characteristics :

Tray : **anti-UV HDPE**  
Capacity : **4 people**  
Tray : **220cm x 30cm**  
Thickness : **50mm**  
Height : **48cm**  
Weight : **13,6kg**



## Trolley transport for INFINITY chair

Trolley specifically designed for the transport and storage of Infinity chairs. Made from silver grey spray-painted steel.

Ref : MODTOT

Length : **172 cm**  
Width : **80 cm**  
Height : **117 cm**  
Weight : **36kg**  
Capacity : **76 infinity chairs**





### Modulo trolley

Folding trolley with extendible base. Compatible with the 152 and 183 straight MODULO tables.  
Made from spray-painted steel.

Ref : MODTRO

Measurements : **254 x 74 x 115cm**

Net weight : **29 kg**

Capacity : **20 MODULO 152**  
ou **20 MODULO 183**



### Trolley transport for LIGHT Chair

Trolley specifically designed for the transport and storage of Infinity chairs.  
Made from silver grey spray-painted steel.

Ref : MODAT

Length : **96 cm**

Width : **47,5 cm**

Height : **197 cm**

Weight : **19kg**

Capacity : **60 LIGHT chairs**



### Trolley for round tables

Trolley with three-position extendible handles. Compatible with the TRP122, TRP150 and TRP180 tables. Made from spray-painted steel.

Ref : MODTTR

Length : **162 cm**

Width : **83 cm**

Height : **102 cm**

Weight : **34kg**

Capacity : **15 TRP122**  
or **15 TRP150** or **12 TRP180**

# Event accessories



## INDOOR STEADY stage

**Indoor use.** Variable height thanks to detachable aluminium feet, 45mm x 45mm section. Permissible load 750kg/m<sup>2</sup> in accordance with standard DIN 1055. Attached by polycarbonate, anti-seize X braces. Reinforced angles. 9cm thick double-walled aluminium profile with groove to attach accessories (railing, stairs etc.)

Standard size 2x1m  
All other sizes on request  
Height from 0,2m to 2m . 4.5cm x 4.5cm  
section (40 x 40 or 60x 60 on request).  
Weight : 34 Kg

Ref : PSTIN



## OUTDOOR STEADY stage

**Outdoor use.** Variable height thanks to detachable aluminium feet, 45mm x 45mm section. Permissible load 750kg/m<sup>2</sup> in accordance with standard DIN 1055. Attached by polycarbonate, anti-seize X braces. Reinforced angles. 9cm thick double-walled aluminium profile with groove to attach accessories (railing, stairs etc.)

Standard size 2x1m  
All other sizes on request  
Height from 0,2m to 2m . 4.5cm x 4.5cm  
section (40 x 40 or 60x 60 on request).  
Weight : 34 Kg

Ref : PSTOU



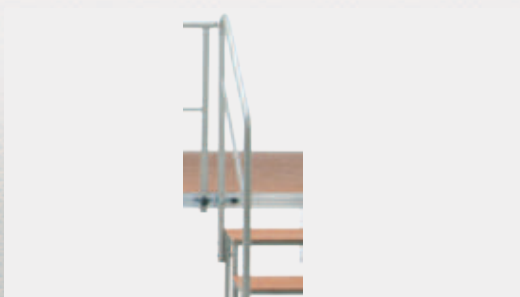
## STAIRS FOR STEADY PODIUM

Stairs for STEADY podium. Available in different sizes :

- **1 step** for 40cm high podium
- **2 steps** for 60cm high podium
- **3 steps** for 80cm high podium
- **4 steps** for 100cm high podium

Step size : **87cm x 20cm**

Ref : ESCSTAK



## HANDRAIL FOR STEADY

Handrail for STEADY podium.  
Available for 2, 3 or 4-step stairs.

Tube 40x2,5mm

Ref : RAMSTA



## STEADY RAILING

Railing for STEADY unit available in 1m or 2m length.

Ref : GCSTAF

---



## Adjustable PODIUM BASE

Adjustable aluminium base, 4.5cm x 4.5cm section

Ref : PISTAR

---

40/60 model :  
**Adjustable height, 40cm by 40cm**  
60/100 model :  
**Adjustable height, 60cm by 100cm**

---



## Fixed PODIUM BASE

Fixed aluminium base, 4.5cm x 4.5cm section

Ref : PISTAF

---

5 heights available :  
**20cm, 40cm, 60cm, 80cm, 100cm height**

---



## RAY FOR PODIUM

Handling and storage trolley. Steel frame with removable push bar.  
Four caster wheels with a 20mm section, 2 wheels with brakes.

Ref : CHAPO

---

Maximum load : **800kg**



# Event accessories



## INDOOR FLEX podium

Modular aluminium podium for indoor use. Height adjusted by a handle without flipping the tray over. Attached by polycarbonate anti-seize X braces. 9cm thick double-walled aluminium profile. Feet with adjustable cylinders up to 20mm.

Ref : FLIN

Height adjustable from 20cm to 200cm in 20cm steps

Width : **200 cm**

Depth : **100 cm**

Thickness when folded : **20cm**

Load capacity : **750 Kg/m2**,  
in accordance with standard DIN 1055

Weight : **51kg**



## OUTDOOR FLEX podium

Modular aluminium podium for indoor use. Height adjusted by a handle without flipping the tray over. Attached by polycarbonate anti-seize X braces. 9cm thick double-walled aluminium profile. Feet with adjustable cylinders up to 20mm.

Ref : FLOU

Height adjustable from 20cm to 200cm in 20cm steps

Width : **200 cm**

Depth : **100 cm**

Thickness when folded : **20cm**

Load capacity : **750 Kg/m2**,  
in accordance with standard DIN 1055

Weight : **51kg**



## Chrome-plated bollard

Easily set up and organize waiting lines with this guiding post equipped with a 3m strap (1 start 3 finishes). Chrome-plated finish.

Ref : POTC

Height : **105 cm**

Base : **Ø 38 cm**

Bollard : **Ø 7,5 cm**

Packed in 2



## Black finish bollard

Easily set up and organize waiting lines with this guiding post equipped with a 3m strap (1 start 3 finishes).

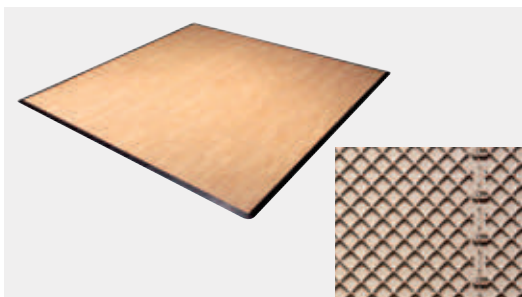
Ref : POTN

Height : **105 cm**

Base : **Ø 38 cm**

Bollard : **Ø 7,5 cm**

Packed in 2



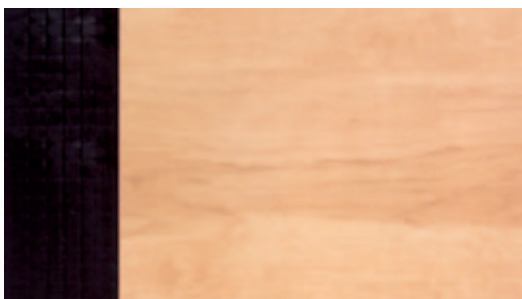
## Indoor dance floor

Vinyl coated polypropylene dance floor, maple colour. Ideal for intensive use. Easily and rapidly installed. Durable quality, withstands inclement weather and heat.

Size of one element : **45,5cm x 45,5cm**  
 Thickness : **14,7 mm**  
 Weight : **1,58 kg**  
 Honeycomb structure

Ref : DPIN

---



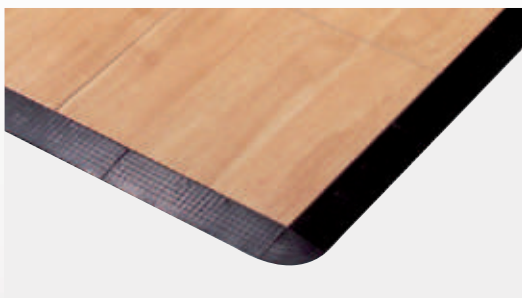
## Indoor dance floor edge

Black edge for INDOOR dance floor. For the perfect finish of your dance floor.

Measurements : **35 cm x 8 cm**  
 Thickness : **14,7 mm**

Ref : CHIN

---



## Black polypropylene corner

For indoor dance floorBlack polypropylene corner for INDOOR dance floor. For the perfect finish of your dance floor.

Thickness : **27mm**  
 Size : **8cm x 8cm**

Ref : CPNIN

---



## Indoor dance floor trolley

Handling trolley for INDOOR dance floor. For the transport of the 50sqm dance floor. One 45.5cm x 45.5cm plate.

Maximum stacking : **50 plates**

Ref : CPIN

---

# EVENT Accessories

---



## MULTI-PRO flooring

High-quality flooring to be used indoors and outdoors. Assembled by interlocking the boards. 3m width over an infinite length. Hot varnish surface treatment.

Ref : PLMUPRO



Board thickness : **21mm**

Wood : **spruce**

Colour : **brilliant light brown**

Weight : **approximately 10kg/sqm**

Size of one element : **295cm x 50cm**

**Equipped with :**

- 3 strips per board (W construction)
- Strips : class III autoclave treatment
- Indented on each side.



## MULTI-PRO finish bar

Metal finish bar around the edge for a perfect aesthetic.

Ref : BFMUPRO



## MULTI-PRO finish angle

Interlocking angle for multi-pro finish bar.

Ref : AFMUPRO

---





## EASY FLOOR flooring

Flooring for indoor or outdoor dance floor. Alternate assembly on cross strips. Custom-made surface area. Hot varnish surface treatment.

### Equipped with :

- 4 strips (45mm x 45mm) per board (W construction)
- Strips : class III autoclave treatment. Infinitely expandable on its length and width.

Ref : PLIN

Board thickness : **21mm**  
Wood : **spruce**  
Colour : **brilliant light brown**  
Weight : **environ 10kg/sqm**  
Format : **200cm x 50cm**  
and **100cm x 50cm**





LPTENT  
EVENT  
SPORT











LPTENT  
EVENT  
SPORT









# They trust in LPTENT





# An international network

---

We convinced the most demanding professionals. The LPTENT company is now looking at development opportunities abroad. Join us to become the actors of this success.

WORLD CONTACT  
[sales@lptent.com](mailto:sales@lptent.com)



**LPTENT**  ®

only the experience



LPTENT/UNDERCOVER MARQUEES

371 Thompson Road  
North Geelong VIC 3215  
Tél : 0425 825 390

[sales@lptent.net.au](mailto:sales@lptent.net.au)  
[www.lptent.net.au](http://www.lptent.net.au)